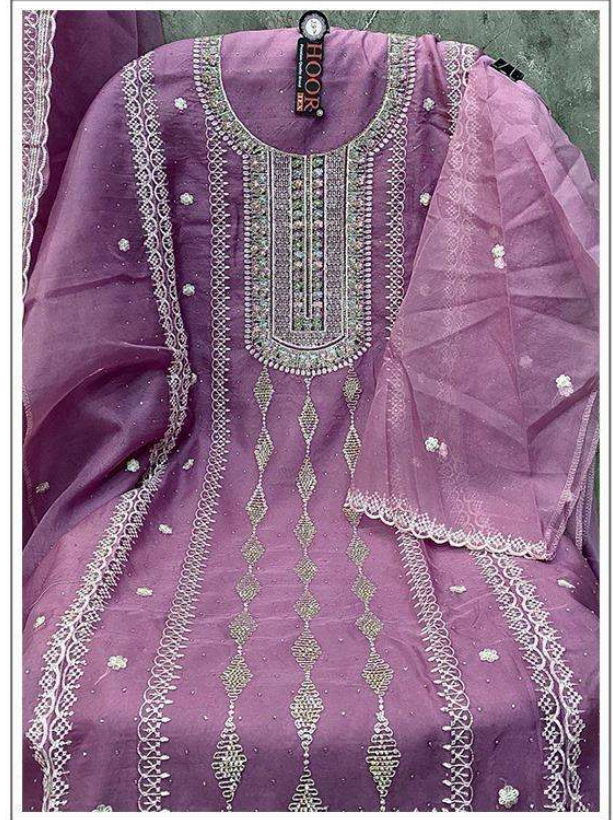






HOOR TEX



OR-85 A

Top :- Heavy Organza With Khatli Work

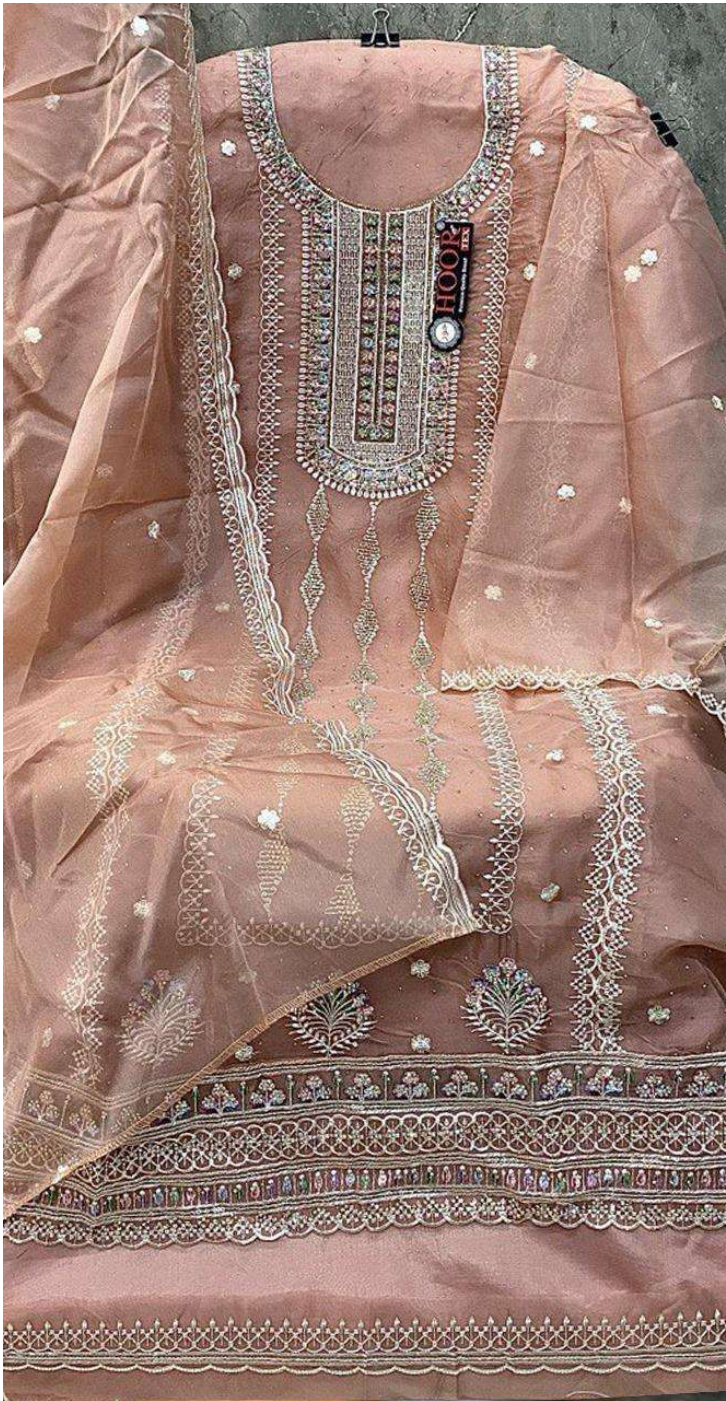
Bottom/Inner :-Santoon

Dupatta :- Heavy Organza

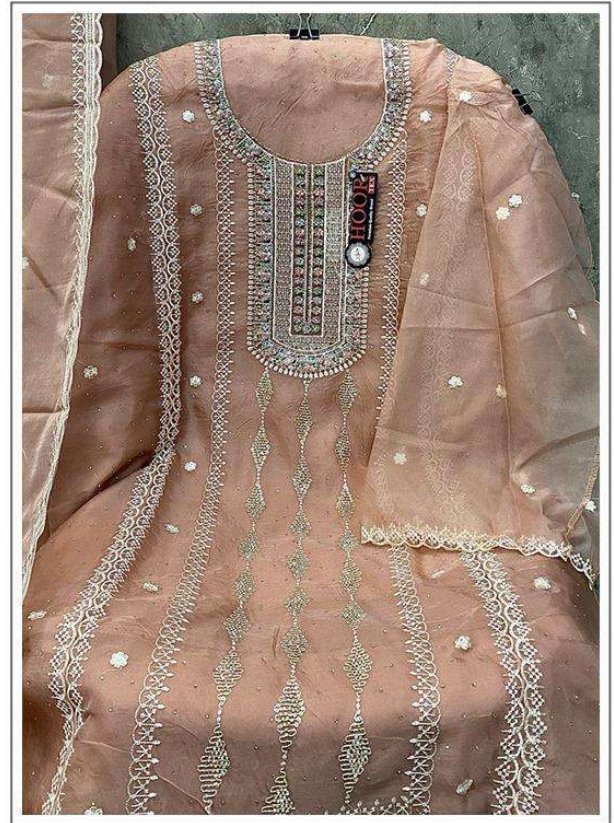
☐ DRY CLEAN ONLY.

✘ DO NOT USE ANY BLEACH OR STAIN REMOVING CHEMICAL.

☐ IRON THE FABRIC AT MODERATE TEMPERATURE.



HOOR TEX



OR-85 B

Top :- Heavy Organza With Khatli Work

Bottom/Inner :-Santoon

Dupatta :- Heavy Organza

Ⓢ DRY CLEAN ONLY.
 ✖ DO NOT USE ANY BLEACH OR STAIN REMOVING CHEMICAL.
 ⚙ IRON THE FABRIC AT MODERATE TEMPERATURE.





HOOR TEX



OR-85 C

Top :- Heavy Organza With Khatli Work

Bottom/Inner :-Santoon

Dupatta :- Heavy Organza

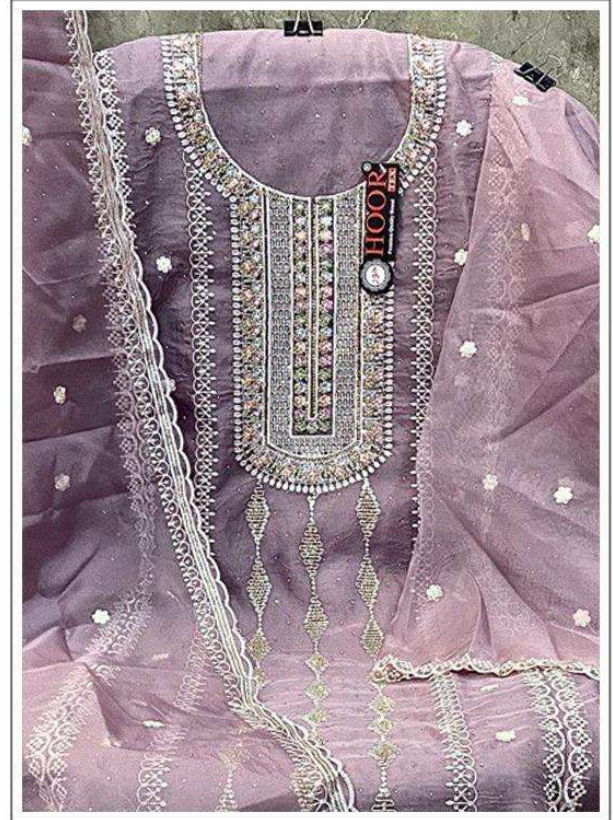
☐ DRY CLEAN ONLY.

✂ DO NOT USE ANY BLEACH OR STAIN REMOVING CHEMICAL.

☐ IRON THE FABRIC AT MODERATE TEMPERATURE.



HOOR TEX



OR-85 D

Top :- Heavy Organza With Khatli Work

Bottom/Inner :-Santoon

Dupatta :- Heavy Organza



☐ DRY CLEAN ONLY.

✘ DO NOT USE ANY BLEACH OR STAIN REMOVING CHEMICAL.

☐ IRON THE FABRIC AT MODERATE TEMPERATURE.



OR-85 A



OR-85 B



OR-85 C



OR-85 D



HOOR TEX