

BelliZa[®]
Designer Studio

SHAHEEN
VOL-02



B

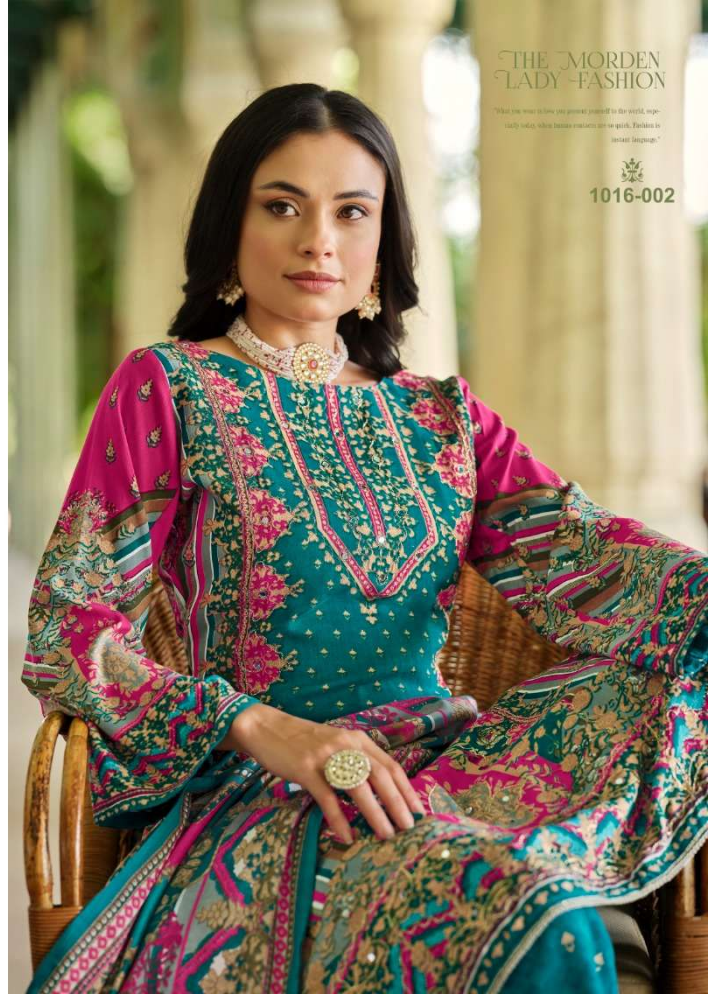


TRENDING
COLLECTION

"What you wear is how you present yourself to the world, especially today, when business contacts are so quick. Fashion is essential to success."

1016-001







THE MORDEN
LADY - FASHION

"What you wear is how you present yourself to the world, especially today, when because contacts are on spark, fashion is become language."



1016-003



B

1016-006



DIFFERENT STYLE

"What you wear is how you present yourself to the world, especially today, when human contacts are so quick. Fashion is instant language."



DIFFERENT
DIRCTION

"What you wear is how you present yourself to the world, especially today when human contacts are so quick. Fashion is the first language."

1016-007







SHAHEEN

VOL-02



1016-001



1016-002



1016-003



1016-004



1016-005



1016-006



1016-007



1016-008