

BelliZa[®]
Designer Studio

SHAHEEN



B



TRENDING
COLLECTION

"What we wear is how we present yourself to the world, especially today when human contacts are so quick. Fashion is great language."

998-001

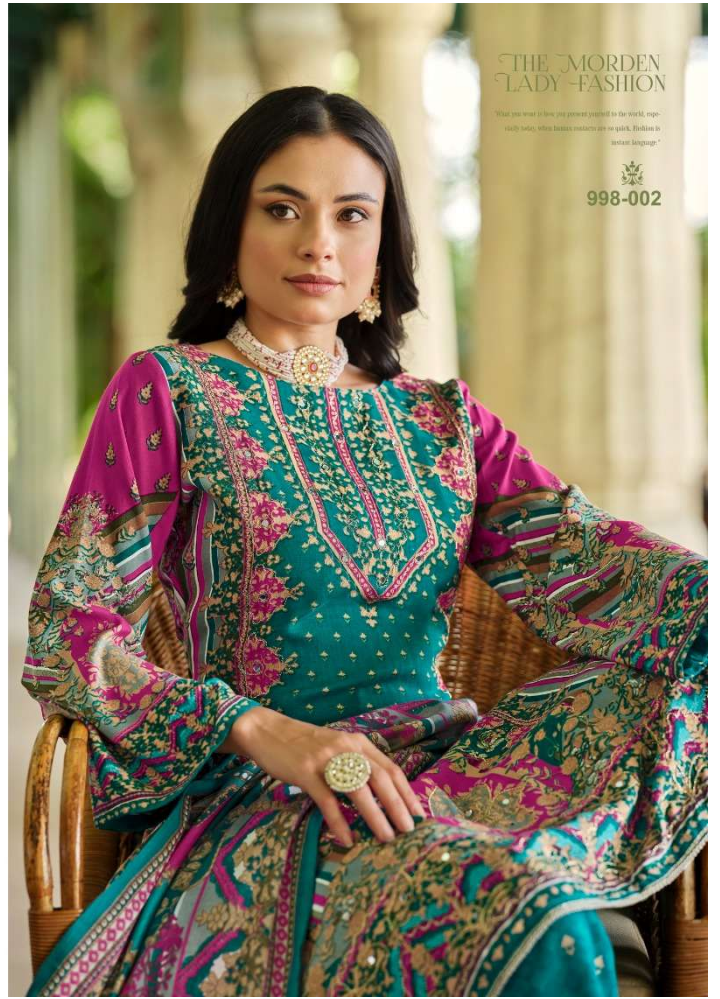


THE MORDEN
LADY - FASHION

"What you wear is how you present yourself to the world, especially today, when business contacts are so quick. Fashion is instant language."



998-003







998-006



DIFFERENT STYLE

"What you wear is how you present yourself to the world, especially today, when human contacts are so quick. Fashion is instant language."



DIFFERENT
DIRCTION

"What you wear is how you present yourself to the world, especially today, when human contacts are so quick. Fashion is silent language."

998-005







DIFFERENT
DIRCTION

"What one wears is how you present yourself to the world, especially today, when human contacts are so sparse. Fashion is selfest language."



998-007



SHAHEEN



998-001



998-002



998-003



998-004



998-005



998-006



998-007



998-008