





 **Alzohaib**

AZ-1014-A

TOP

Organza with Heavy
Embroidery

BOTTOM-INNER

Heavy Santoon

DUPATTA

Organza with Heavy
Embroidery

CARE INSTRUCTIONS

- ☉ Dry clean only
- ⚠ Do not use any bleach or stain removing chemical
- ☐ Iron the fabric at moderate temperature
- ☒ Do not dry fabric in direct sunlight





Alzohaib

AZ-1014-A

TOP

Organza with Heavy Embroidery

BOTTOM-INNER

Heavy Saritoon

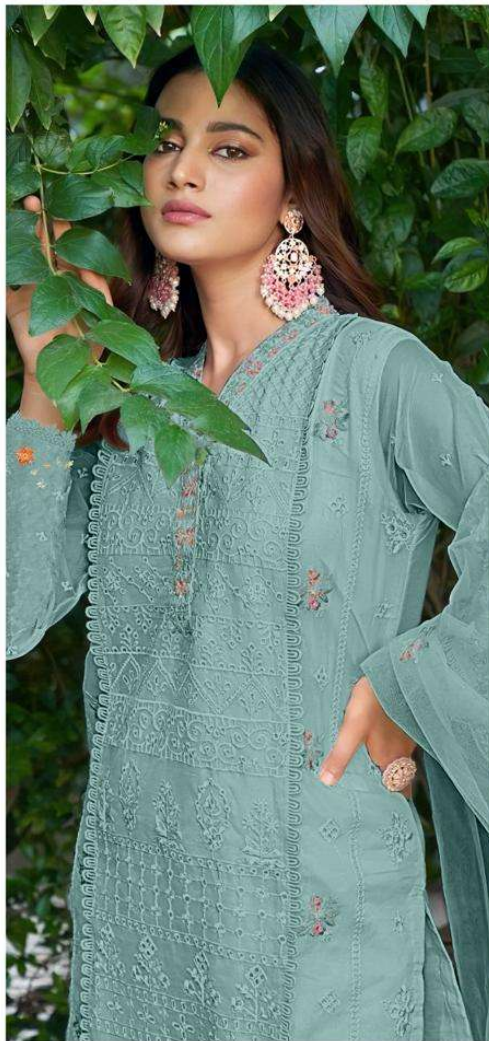
DUPATTA

Organza with Heavy Embroidery

CARE INSTRUCTIONS

- Dry clean only
- Do not use any bleach or other whitening agents
- Iron dry below at moderate temperature
- Do not dry back at direct sunlight





 **Alzohaib**

AZ-1014-B

TOP

Organza with Heavy
Embroidery

BOTTOM-INNER

Heavy Santoon

DUPATTA

Organza with Heavy
Embroidery

CARE INSTRUCTIONS

- ☉ Dry clean only
- ⚠ Do not use any bleach or stain removing chemical
- ☐ Iron the fabric at moderate temperature
- ☒ Do not dry fabric in direct sunlight





Alzohaib

AZ-1014-B
TOP
Organza with Heavy Embroidery

BOTTOM-INNER
Heavy Santoon

DUPATTA
Organza with Heavy Embroidery

CARE INSTRUCTIONS

- Do not iron
- Do not use any bleach or spin removing chemical
- Wash like other dry cleaning equipment
- Do not dry before or after washing





 **Alzohaib**

AZ-1014-C

TOP

Organza with Heavy
Embroidery

BOTTOM-INNER

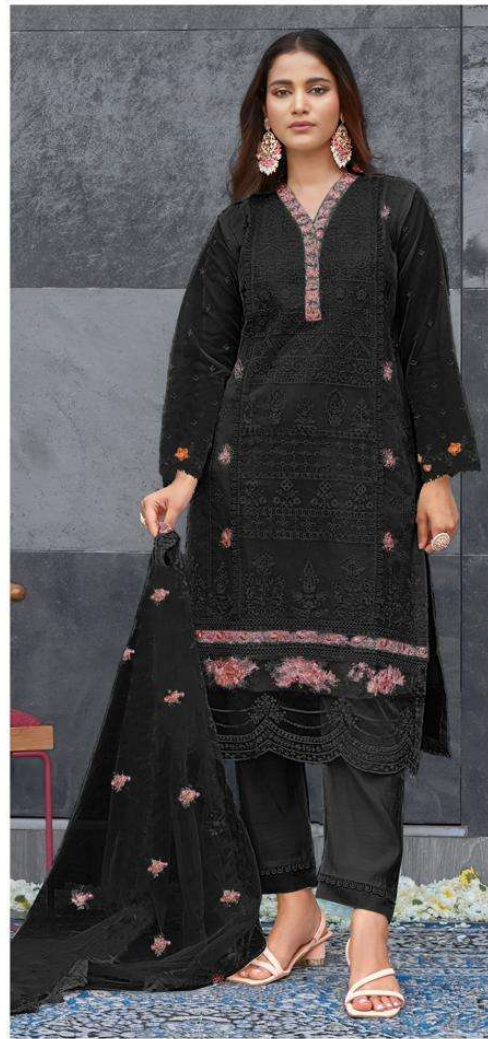
Heavy Santoon

DUPATTA

Organza with Heavy
Embroidery

CARE INSTRUCTIONS

- ☉ Dry clean only
- ⚠ Do not use any bleach or stain removing chemical
- ☐ Iron the fabric at moderate temperature
- ☒ Do not dry fabric in direct sunlight





Alzohaib

AZ-1014-C
TOP
Organza with Heavy
Embroidery

BOTTOM-INNER
Heavy Santoon

DUPATTA
Organza with Heavy
Embroidery

CARE INSTRUCTIONS
① Dry clean only
② Hand wash in cold water
③ Do not use bleach or iron
④ Do not use steam iron





 **Alzohaib**

AZ-1014-D

TOP

Organza with Heavy
Embroidery

BOTTOM-INNER

Heavy Santoon

DUPATTA

Organza with Heavy
Embroidery

CARE INSTRUCTIONS

- ☉ Dry clean only
- ⚠ Do not use any bleach or stain removing chemical
- ☐ Iron the fabric at moderate temperature
- ☒ Do not dry fabric in direct sunlight





Alzohaib

AZ-1014-D
TOP
Organza with Heavy Embroidery

BOTTOM-INNER
Heavy Santoon

DUPATTA
Organza with Heavy Embroidery

CARE INSTRUCTIONS

- ☐ Dry clean only
- ☐ Do not use bleach or any other harsh detergent
- ☐ Iron the fabric at a medium temperature
- ☐ Do not dry wash in water

CARE INSTRUCTIONS

- ☉ Dry clean only
- ⚠ Do not use any bleach or stain removing chemical
- ☐ Iron the fabric at moderate temperature
- ☀ Do not dry fabric in direct sunlight



TOP Organza with Heavy Embroidery BOTTOM-INNER Heavy Santoon DUPATTA Organza with Heavy Embroidery



AZ-1014-A



AZ-1014-B



AZ-1014-C



AZ-1014-D