



Alzohaib



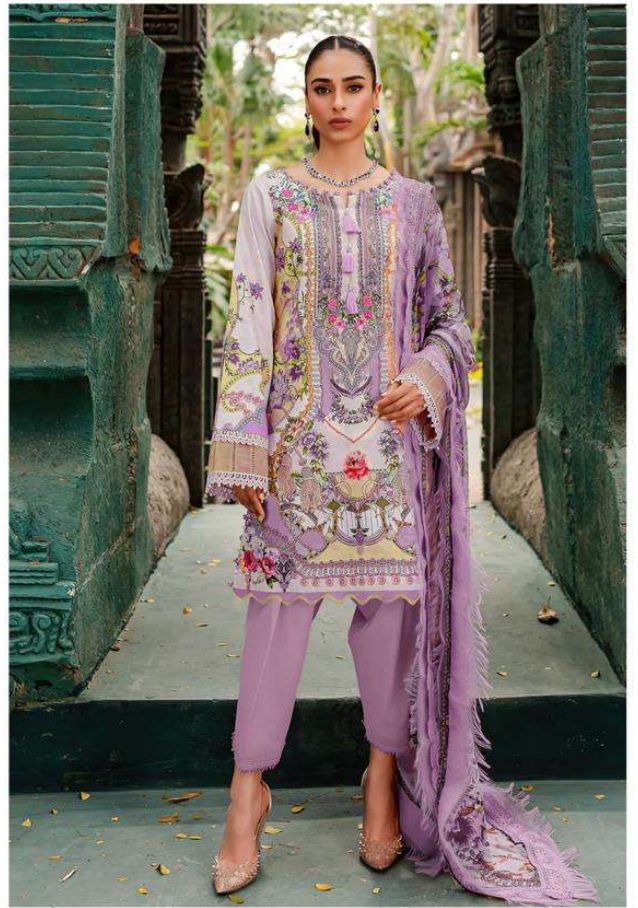
**Queen Court**  
Vol-1



Alzohaib



AZ.1023







Alzohaib

**AZ-1023**  
TOP  
PURE COTTON PRINT WITH  
EXCLUSIVE EMBROIDERY  
FINISHES  
BOTTOM  
SEMI LAWN  
DUPATTA  
COTTON/CHIFFON

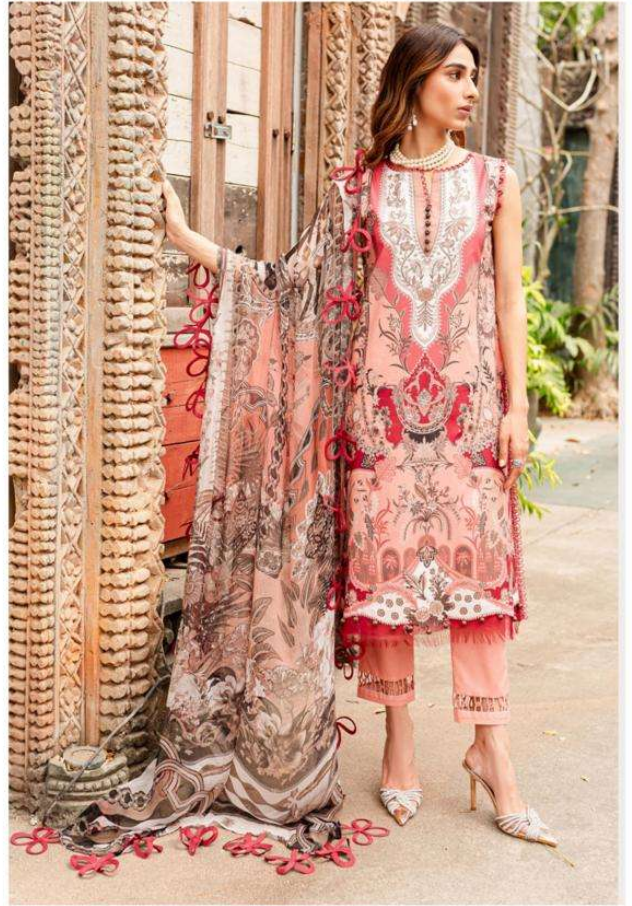
CARE INSTRUCTIONS:  
Wash in cold water  
Do not use bleach  
Do not iron directly  
Dry clean preferred



Alzohaib



AZ.1024







**Alzohaib**

**AZ-1024**  
**TOP**  
PURE COTTON PRINT WITH  
EXCLUSIVE EMBROIDERY  
PATCHES

**BOTTOM**  
SEMI LAWN  
**DUPATTA**  
COTTON/CHIFFON

**CARE INSTRUCTIONS**  
① Wash in cold water  
② Do not use bleach or other staining agents  
③ Iron on low temperature  
④ Do not dry in direct sunlight



Alzohaib



AZ.1025







Alzohaib



**Alzohaib**

**AZ-1025**

**TOP**  
PURE COTTON PRINT WITH  
EXCLUSIVE EMBROIDERY  
PATCHES

**BOTTOM**  
SEMILAWN

**DUPATTA**  
COTTON/CHIFFON

CARE INSTRUCTIONS:  
Wash in cold water  
Do not use bleach  
Do not iron directly  
Dry clean preferred



Alzohaib



AZ.1026







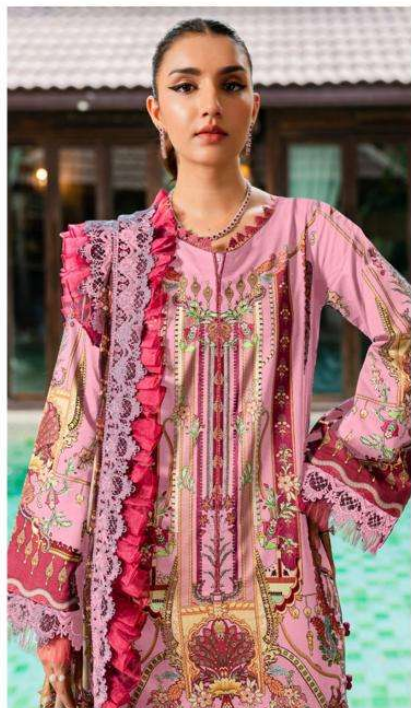
Alzohaib

AZ-1026  
TOP  
PURE COTTON PRINT WITH  
EXCLUSIVE EMBROIDERY  
PACHES  
BOTTOM  
SEMI LAIN  
DUPATTA  
COTTON/CHIFFON

SIZE INFORMATION  
S M L XL  
S: 34-35  
M: 36-37  
L: 38-39  
XL: 40-41



Alzohaib



AZ.1027







Alzohab

**AZ-1027**  
**TOP**  
PURE COTTON PRINT WITH  
EXCLUSIVE EMBROIDERY  
PATCHES  
**BOTTOM**  
SEMI LAIN  
**DUPATTA**  
COTTON/CHIFFON

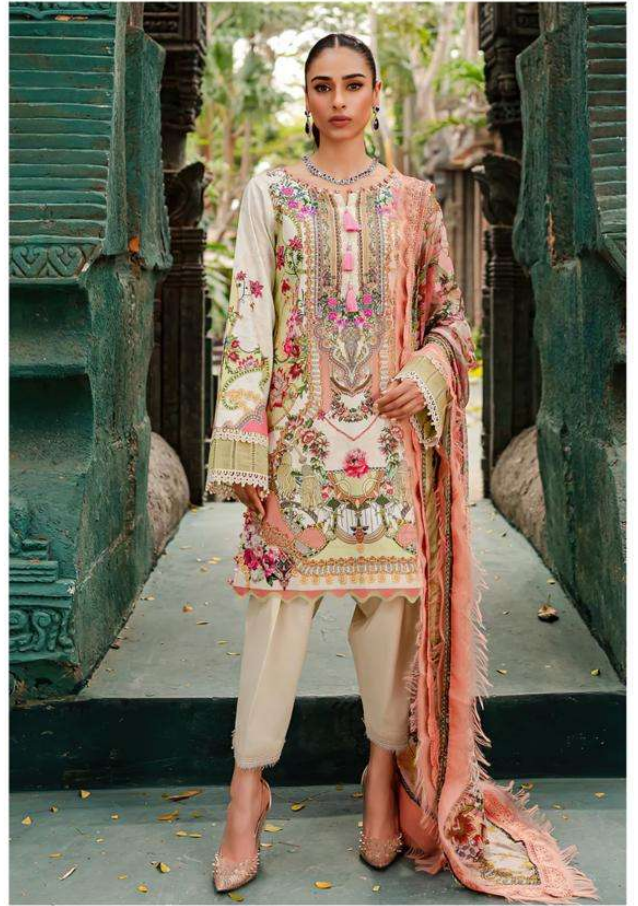
HOW TO MEASURE  
1. Bust  
2. Length  
3. Sleeve Length  
4. Waist  
5. Hem Width



Alzohaib



AZ.1028







**Alzohaib**

**AZ-1028**  
**TOP**  
PURE COTTON PRINT WITH  
EXCLUSIVE EMBROIDERY  
PATCHES

**BOTTOM**  
SEMI LAWN  
DUPATTA  
COTTON/CHIFFON

**CARE INSTRUCTIONS:**  
1. Do not wash in hot water  
2. Do not use bleach  
3. Do not use iron on high heat  
4. Do not dry clean



Alzohaib

Alzohaib



AZ-1023



AZ-1024



AZ-1025



AZ-1026



AZ-1027



AZ-1028