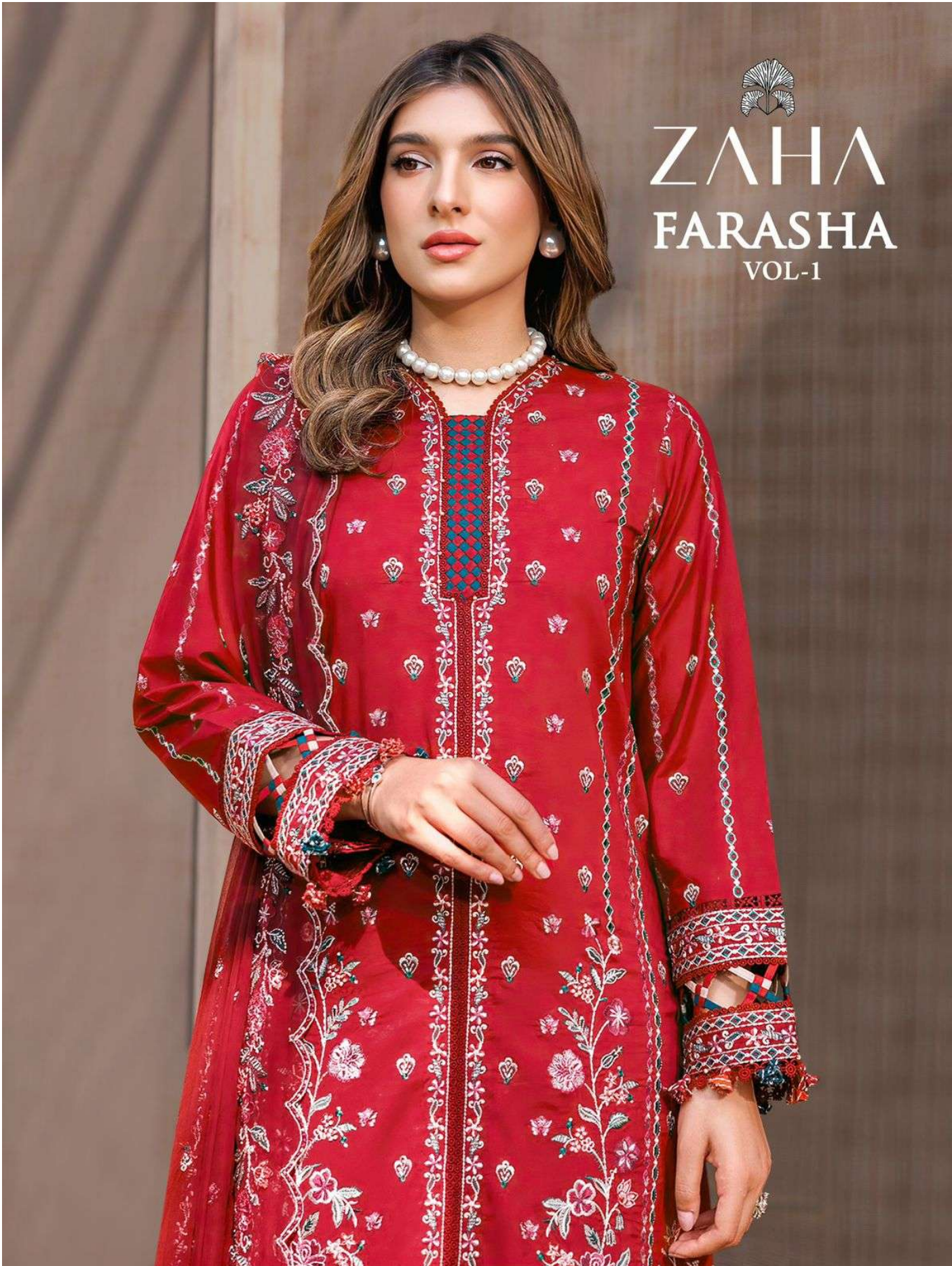




ZAHA  
FARASHA  
VOL-1





**FARASHA**  
VOL-1

**ZAHA**

D.No.10314

**TOP** Cambric Cotton With  
Heavy Embroidery Work

**BOTTOM-INNER**  
Semi Lawn

**DUPATTA** Butterfly Net with  
Heavy Embroidery



**FARASHA**  
VOL-1

**ZAHA** D.No. 10

TOP Cambric Cotton With Heavy Embroidery Work

SLIP-INNER

DUPATTA



**FARASHA**  
VOL-1

**ZAHA**

D.No.10315

**TOP** Cambric Cotton With  
Heavy Embroidery Work

**BOTTOM-INNER**  
Semi Lawn

**DUPATTA** Butterfly Net with  
Heavy Embroidery



**FARASHA**  
VOL-1

**ZAHA**

TOP Cambric Cotton With Heavy Embroidery Work

BOTTOM-INT  
Kerni



**FARASHA**  
VOL-1

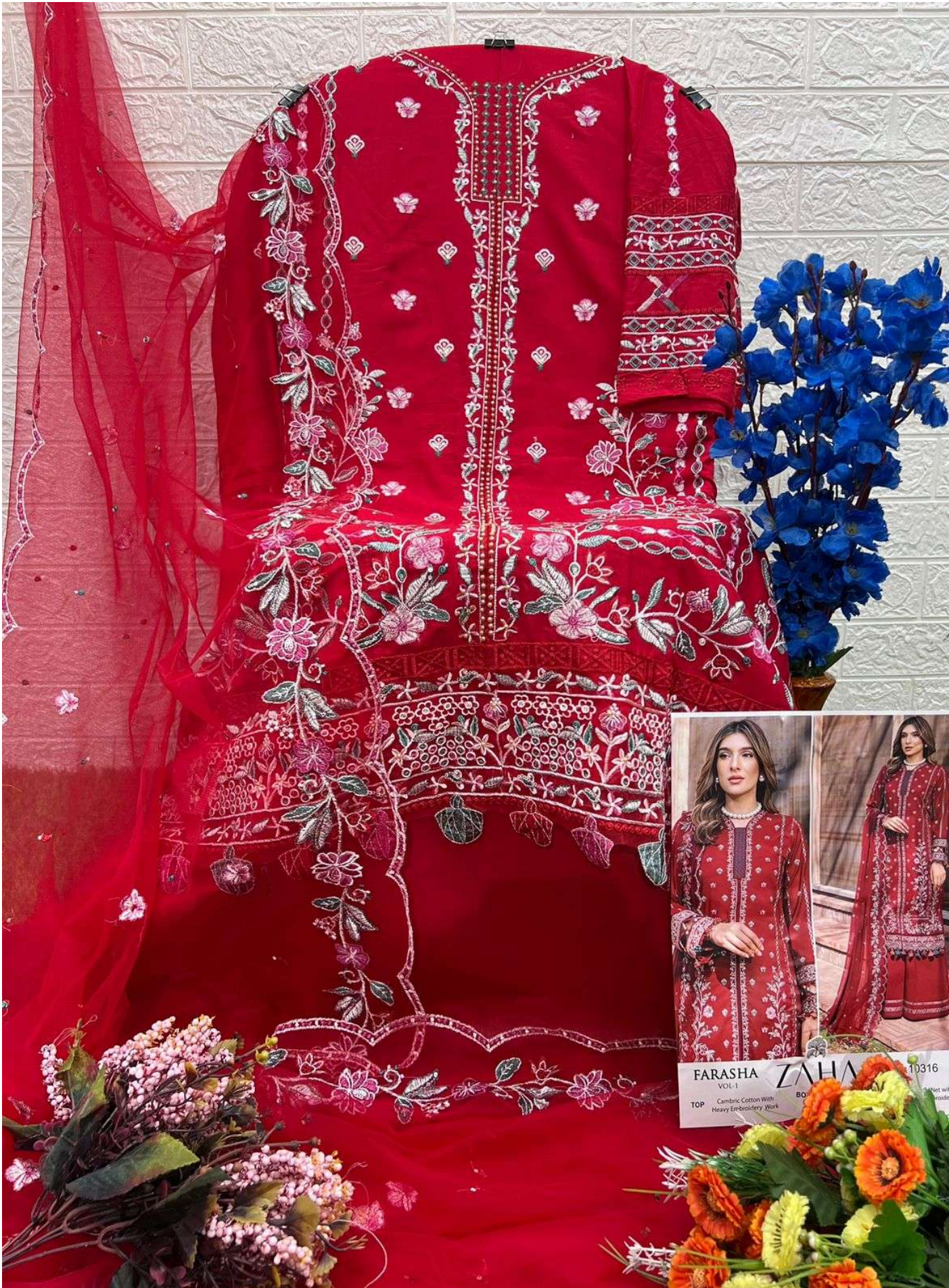
**ZAHA**

D.No.10316

**TOP** Cambric Cotton With  
Heavy Embroidery Work

**BOTTOM-INNER**  
Semi Lawn

**DUPATTA** Butterfly Net with  
Heavy Embroidery



**FARASHA**  
VOL-1

**ZAHN**

10316

TOP Cambric Cotton With Heavy Embroidery Work

BO

Net w  
roide



**FARASHA**  
VOL-1

**ZAHA**

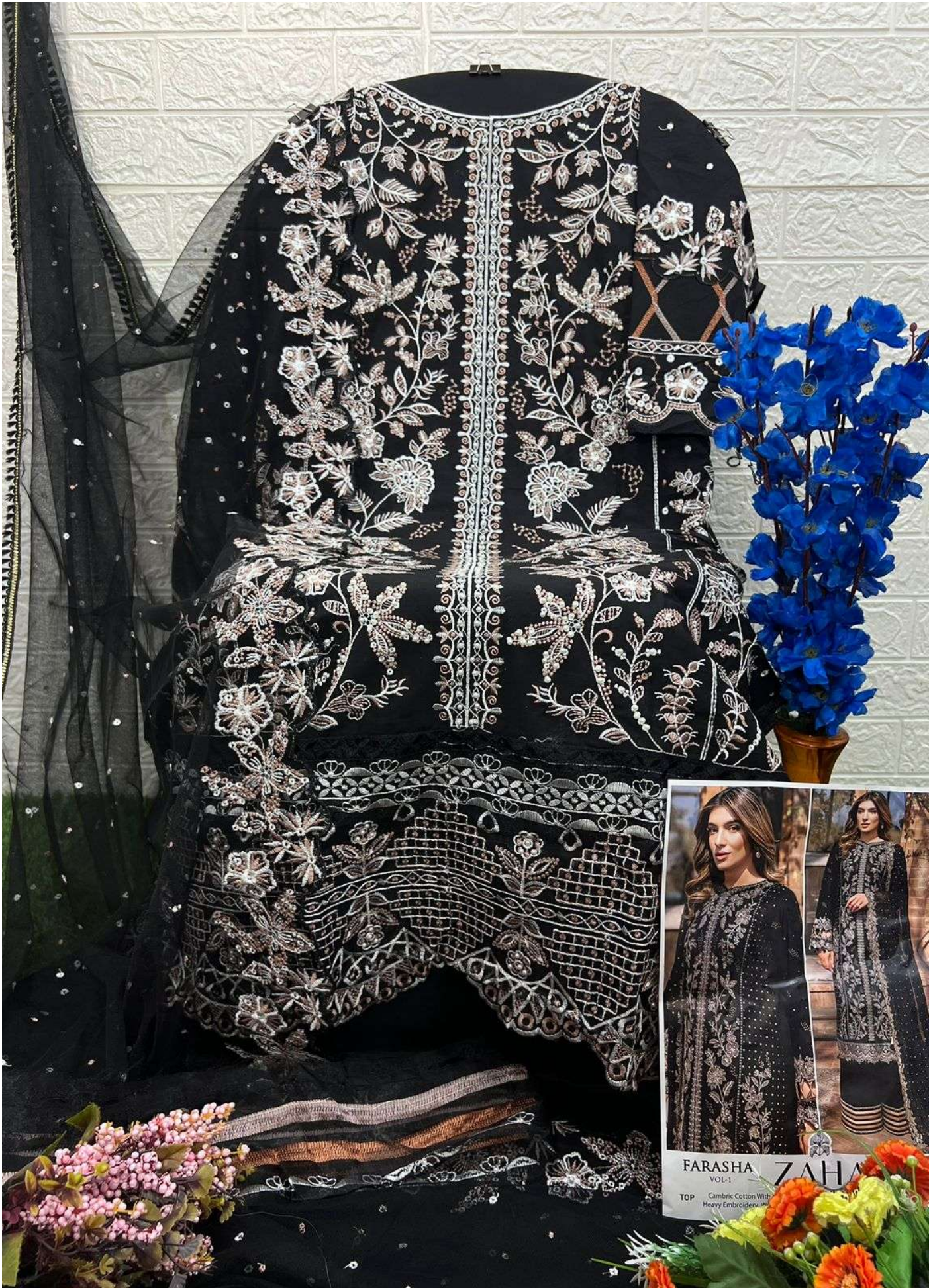
D.No.10317

**TOP** Cambric Cotton With  
Heavy Embroidery Work

**BOTTOM-INNER**  
Semi Lawn

**DUPATTA** Butterfly Net with  
Heavy Embroidery





**FARASHA** VOL-1 **ZAHARA**  
TOP Cambic Cotton With Heavy Embroidery

ZAHA

# FARASHA

VOL-1

TOP Cambric Cotton With Heavy Embroidery Work

BOTTOM-INNER Semi Lawn

DUPATTA Butterfly Net with Heavy Embroidery



10314



10315



10316



10317