





M-314 C



FEBRIC DETAIL	
TOP:-	PURE ORGANZA EMBROIDERED WORK WITH KHATLI WORK
BOTTOM/INNER:-	DULL SANTOON
DUPATTA:-	PURE ORGANZA WITH EMBROIDERY WORK

☞ DRY CLEAN ONLY.
☞ DO NOT USE ANY BLEACH OR STAIN REMOVING CHEMICAL.
☞ IRON THE FABRIC AT MODERATE TEMPERATURE.







M-314 B



FEBRIC DETAIL

TOP:- PURE ORGANZA EMBROIDERED WORK WITH KHATLI WORK

BOTTOM/INNER:- DULL SANTOON

DUPATTA:- PURE ORGANZA WITH EMBROIDERY WORK

 DRY CLEAN ONLY.
 DO NOT USE ANY BLEACH OR STAIN REMOVING CHEMICAL.
 IRON THE FABRIC AT MODERATE TEMPERATURE.



M
MUSHQ
A brand by Shreef



M-314 A



FABRIC DETAIL

TOP: FINE COTTON, LACE, TISSUE NETS
BOTTOMWEAR: 100% COTTON
EMBROIDERY: HAND EMBROIDERY WITH 24K GOLDEN THREAD





M-314 A



FEBRIC DETAIL

TOP:- PURE ORGANZA EMBROIDERED WORK
WITH KHATLI WORK

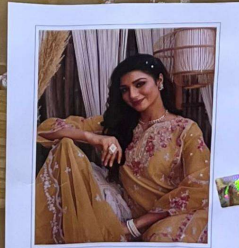
BOTTOM/INNER:- DULL SANTOON

DUPATTA:- PURE ORGANZA WITH EMBROIDERY WORK

 DRY CLEAN ONLY.
 DO NOT USE ANY BLEACH OR STAIN REMOVING CHEMICAL.
 IRON THE FABRIC AT MODERATE TEMPERATURE.



M
MUSHQ
A brand by Idrisella



M-314 C
FABRIC DETAIL
TOP: PURE SILK WITH COTTON LACE
BOTTOM: PURE SILK WITH COTTON LACE
EMBROIDERY: PURE SILK WITH COTTON LACE



M-314 D



FEBRIC DETAIL

- TOP:-** PURE ORGANZA EMBROIDERED WORK WITH KHATLI WORK
BOTTOM/INNER:- DULL SANTOON
DUPATTA:- PURE ORGANZA WITH EMBROIDERY WORK

☐ DRY CLEAN ONLY.
 ✖ DO NOT USE ANY BLEACH OR STAIN REMOVING CHEMICAL.
 ☐ IRON THE FABRIC AT MODERATE TEMPERATURE.





FEBRIC DETAIL

TOP:- PURE ORGANZA EMBROIDERED WORK
WITH KHATLI WORK
BOTTOM/INNER:- DULL SANTOON
DUPATTA:- PURE ORGENZA WITH EMBROIDERY WORK



M-314 A



M-314 B



M-314 C



M-314 D