



ZAHA

*Ramsha*

VOL-15







*Ramsha*  
Vol-15

**ZAHA**

D.No.10240

**TOP** Faux Georgette  
with Embroidery  
(Cut-2.5 Mtr )

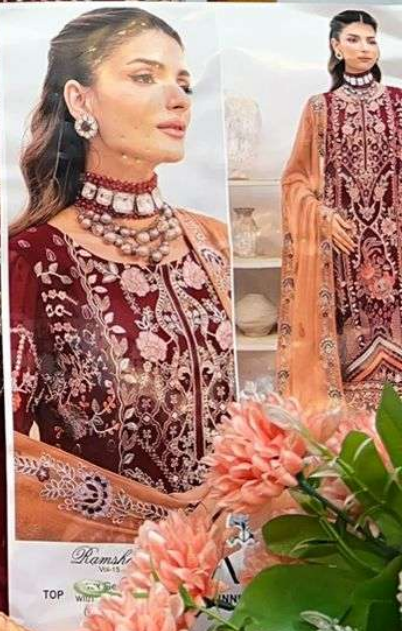
**BOTTOM-INNER** Dull Santoon  
(Cut-4.20 Mtr )

**DUPATTA** Nazmin with  
Embroidery  
(Cut-2.5 Mtr )





ZAHIA







Ramsh  
Vol-15  
TOP Faux G  
with E  
(Cut  
OM-INN





*Ramsha*  
Vol-15

**Z A H A**

D.No.10241

**TOP** Faux Georgette  
with Embroidery  
(Cut-2.5 Mtr )

**BOTTOM-INNER** Dull Santoon  
(Cut-4.20 Mtr )

**DUPATTA** Nazmin with  
Embroidery  
(Cut-2.5 Mtr )





ZAHA











*Ramsha*  
Vol-15

**ZAHA**

D.No.10242

**TOP** Faux Georgette  
with Embroidery  
(Cut-2.5 Mtr )

**BOTTOM-INNER** Dull Santoon  
(Cut-4.20 Mtr )

**DUPATTA** Net Dupatta  
(Cut-2.5 Mtr )



ZAHIA



*Ramsha*  
TOP Faux Georgette with Embroidery (Cut-2.5 Mtr)  
BOTTOM-INNER Dull Satin (Cut-4)

ZAHIA





*Ramsha*  
Vol-15

**ZAH**

TOP Faux Georgette with Embroidery (Cut-2.5 Mtr)

BOTTOM-INNER Dull S (Cut-2)





*Ramsha*  
Vol-15

**Z A H A**

D.No.10243

**TOP** Faux Georgette  
with Embroidery  
(Cut-2.5 Mtr )

**BOTTOM-INNER** Dull Santoon  
(Cut-4.20 Mtr )

**DUPATTA** Net Dupatta  
(Cut-2.5 Mtr )





ZAHHA



*Ramsha*  
TOP  
Faux Ge  
with Emb  
(Cut-2.5 M)



TOP-100-IN







Ramsha  
Vol-15  
TOP Faux C  
with Em  
(Cut-2  
Z  
BOTTOM-IP



ZAHA

Ramsha  
Vol-15

ZAHA



10240



10241



10242



10243