

**TOP- HEAVY FOX GEROGETTE EMBROIDERED  
WITH DAIMOND WORK**

**M-243 A**

**INNER- SANTOON**

**BOTTOM- SANTOON**

**DUPATTA/NET- HEAVY EMBROIDERY WORK**

- ☐ DRY CLEAN ONLY.
- ✗ DO NOT USE ANY BLEACH OR STAIN REMOVING CHEMICAL.
- ☐ IRON THE FABRIC AT MODERATE TEMPERATURE.













M  
MUSHQ

TOP: HEAVY FOX GECOCETTE EMBROIDERED  
WITH BALLOON WORK

INNER: SANTOON

BOTTOM: SANTOON

DUPTA: NET-HEAVY EMBROIDERY WORK

DO NOT CLEAN ONLY

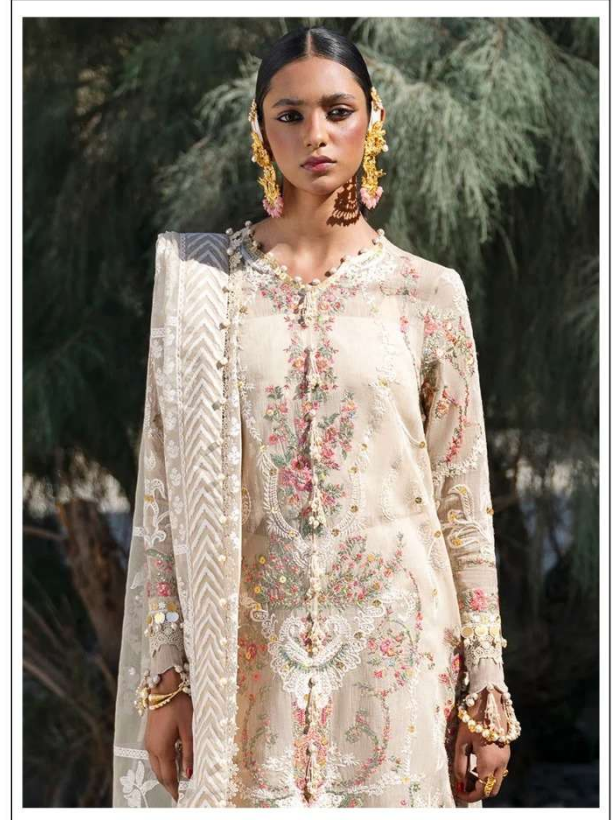
DO NOT USE ANY BLEACH OR STAIN REMOVING CHEMICAL

DO NOT IRON THE FABRIC AT MEDIUM TO HIGH TEMPERATURE

M-243 A

shaddha





**TOP- DULL ORGANZA WITH HEAVY EMBROIDERY**

**M-243 B**

**BOTTOM/INNER- SANTOON**

**DUPATTA/NET- ORGANZA WITH WORK WITH 4 SIDE CUT WORK LACE**

- ☐ DRY CLEAN ONLY.
- ✗ DO NOT USE ANY BLEACH OR STAIN REMOVING CHEMICAL.
- ☐ IRON THE FABRIC AT MODERATE TEMPERATURE.













**MUSHQ**

TOP- HEAVY FOX GEROGETTE EMBROIDERED  
WITH DIAMOND WORK

INNER- SANTOON

BOTTOM- SANTOON

DUPATTA- ETC- HEAVY EMBROIDERY WORK

① DRY CLEAN ONLY  
② DO NOT BLEACH OR STAIN REMOVING CHEMICAL  
③ IRON THE FABRIC AT MODERATE TEMPERATURE.

(M-243 B)





**TOP- DULL ORGANZA WITH HEAVY EMBROIDERY**

M-243 C

**BOTTOM/INNER- SANTOON**

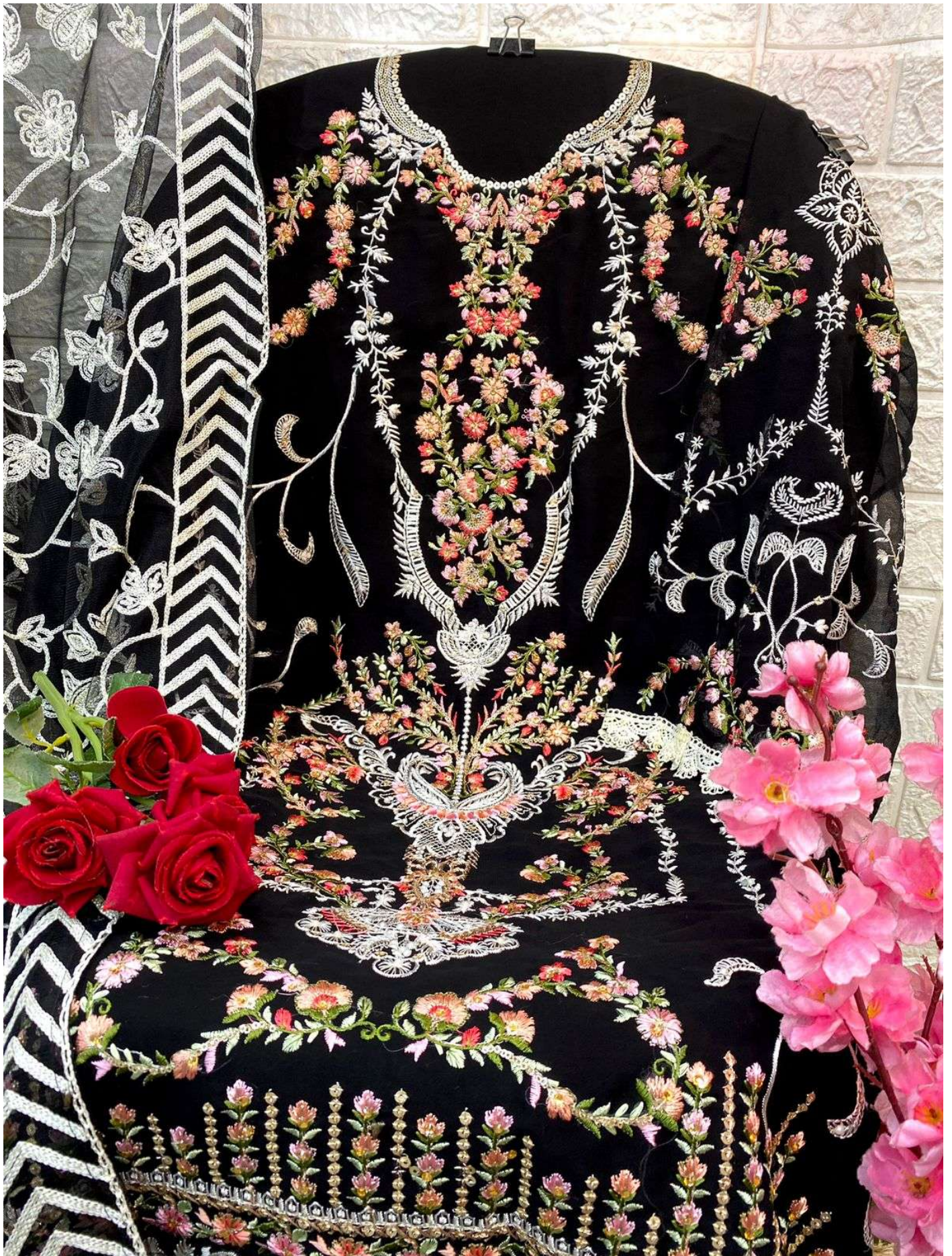
**DUPATTA/NET- ORGANZA WITH WORK WITH 4 SIDE CUT WORK LACE**

☐ DRY CLEAN ONLY.

✗ DO NOT USE ANY BLEACH OR STAIN REMOVING CHEMICAL.

☐ IRON THE FABRIC AT MODERATE TEMPERATURE.















**TOP-** HEAVY FOX GEROGETTE EMBROIDERED  
WITH DALMOND WORK

**INNER-** SANTOON

**BOTTOM-** SANTOON

**DUPATTA/NET-** HEAVY EMBROIDERY WORK



D.No-243 A



D.No-243 B



D.No-243 C