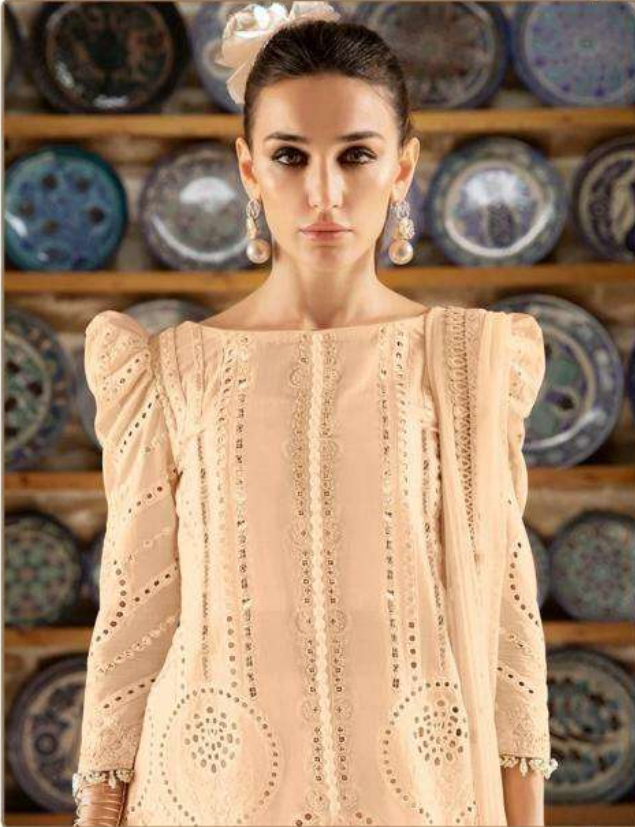






#R-584-A



TOP- CAMBRIC EMBROIDERY  
BOTTOM- PURE COTTON  
DUPATTA - NAZMEEN EMBROIDERY



- Ⓟ DRY CLEAN ONLY.
- ✖ DO NOT USE ANY BLEACH OR STAIN REMOVING CHEMICAL.
- ☎ IRON THE FABRIC AT MODERATE TEMPERATURE.





*Ranishi*  
BR-594-A

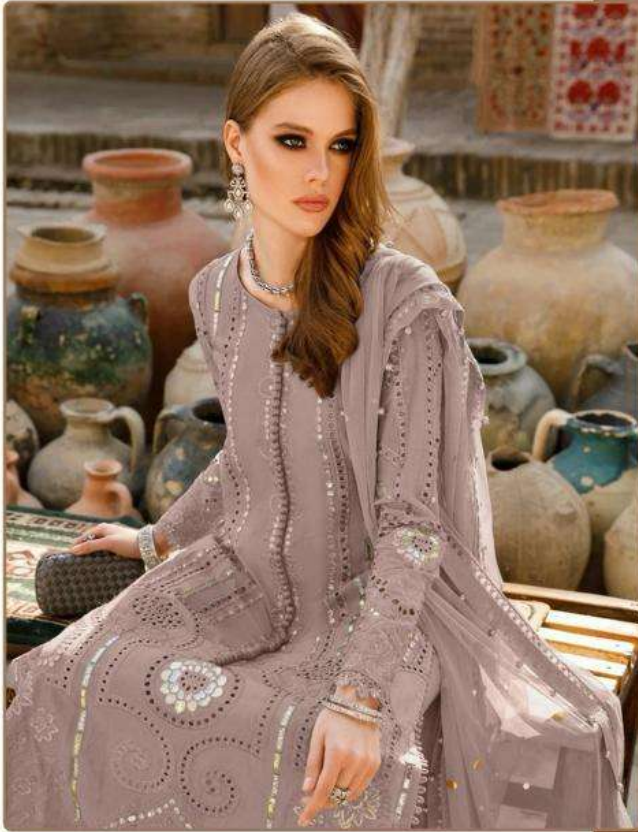
TOP: CANTING BERSUDUT  
BODICE: PUNY CANTON  
ROKOKO (SALAMON BERSUDUT)

• BAHAN: KATUN  
• BAHAN: KATUN





#R-584-B



TOP- CAMBRIC EMBROIDERY  
BOTTOM- PURE COTTON  
DUPATTA - NAZMEEN EMBROIDERY

- Ⓟ DRY CLEAN ONLY.
- ✘ DO NOT USE ANY BLEACH OR STAIN REMOVING CHEMICAL.
- ☎ IRON THE FABRIC AT MODERATE TEMPERATURE.







Ramsha®  
584-NX



#R-584-A

Ramsha®  
584-NX



#R-584-B