

A woman with long dark hair is wearing a vibrant, multi-colored patterned dress in shades of green, blue, and purple. She is holding a large bouquet of white and pink flowers. The background is a soft, out-of-focus outdoor setting. In the top right corner, there is a logo consisting of a red and black stylized 'S' or 'D' shape.

DS

Charizma

range bahar



PUT YOUR IRON HAND IN A GLOVE



3311



3313



A THRONE IS ONLY A BENCH COVERED



3312

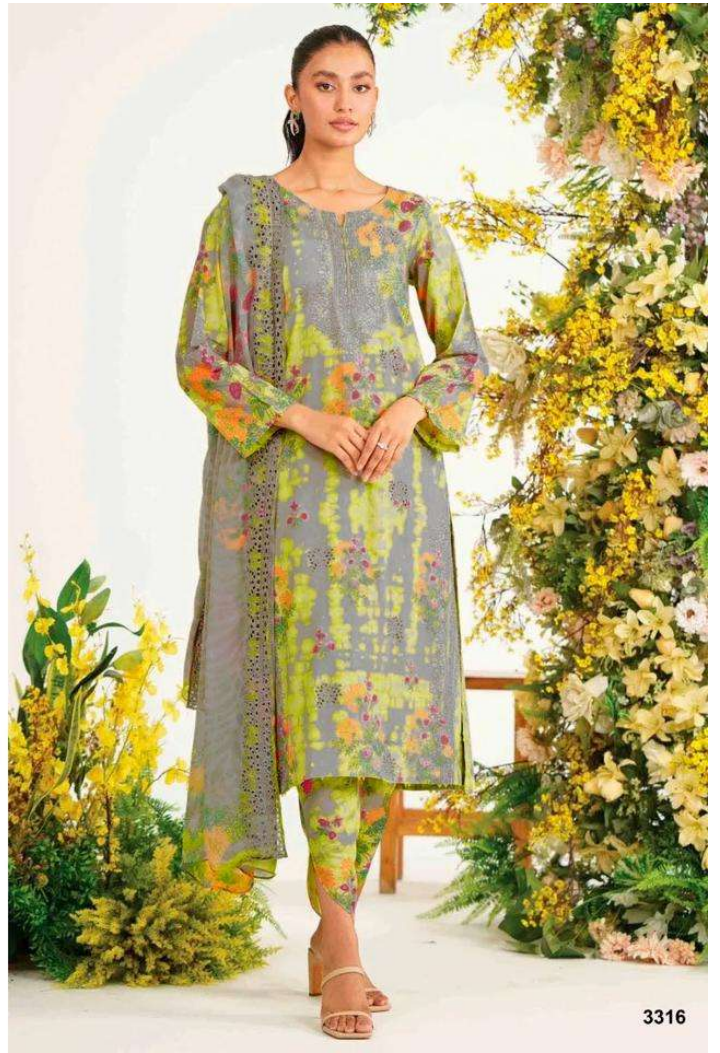




LIVE LIKE THE VELVET MOLE



3314



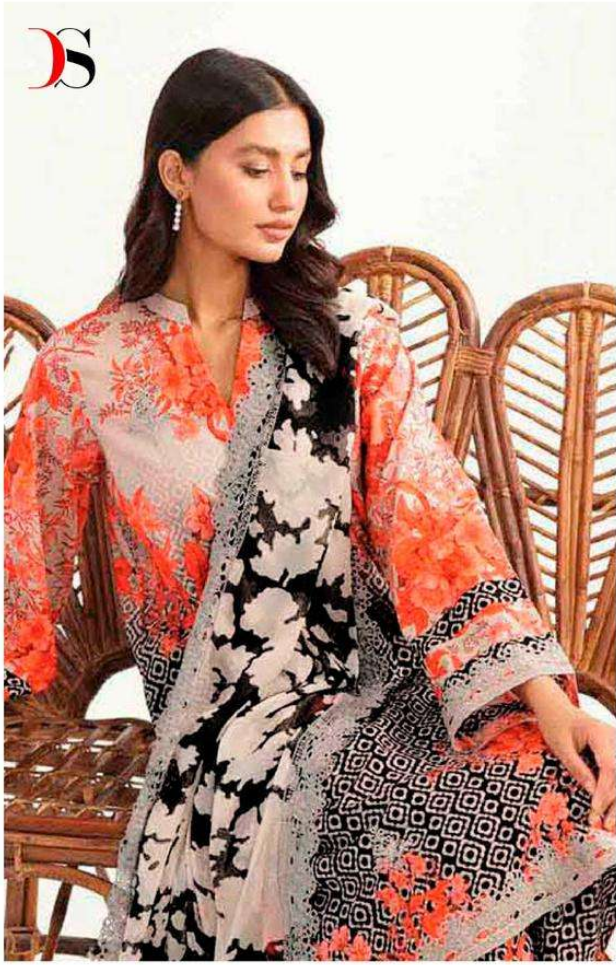


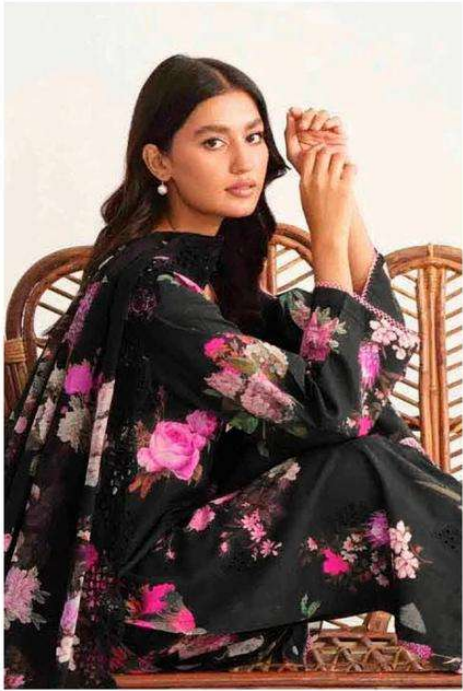
PUT YOUR IRON HAND IN A GLOVE



3315







GO BURROW UNDERGROUND





Charizma

rang e bahar



3311

3312



3315

3316



3313

3314



3317

3318