

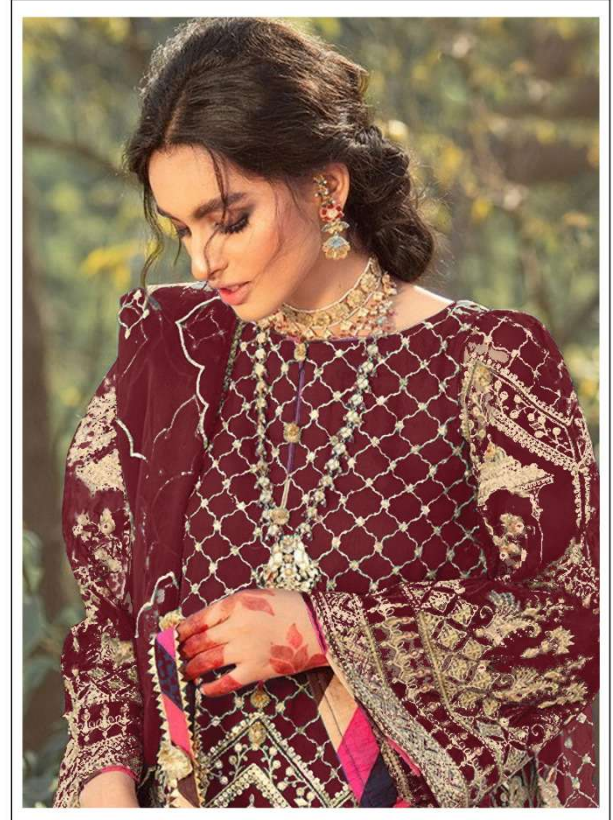
TOP- DULL ORGANZA WITH HEAVY EMBROIDERY

M-217

BOTTOM/INNER- SANTOON

DUPATTA/NET- ORGANZA WITH WORK WITH 4 SIDE CUT WORK LACE

- ☉ DRY CLEAN ONLY.
- ✘ DO NOT USE ANY BLEACH OR STAIN REMOVING CHEMICAL.
- ☎ IRON THE FABRIC AT MODERATE TEMPERATURE.



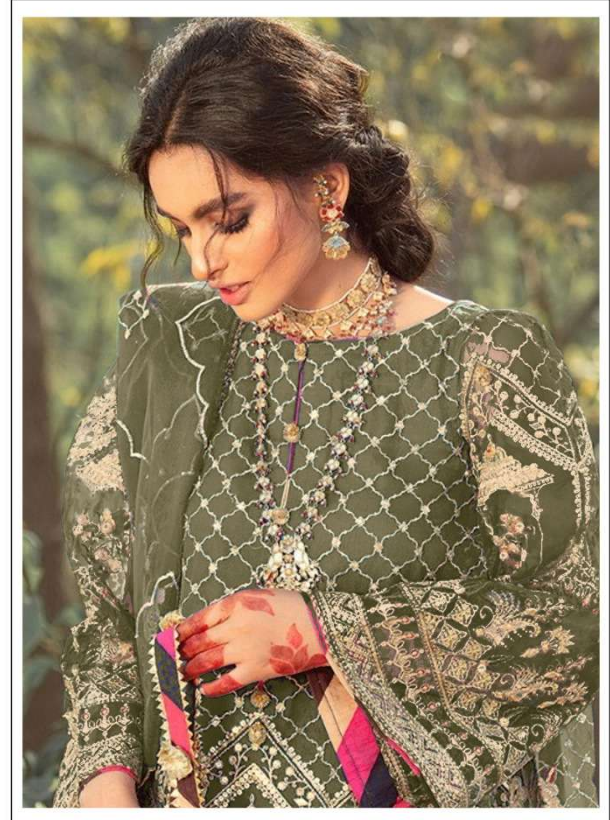
TOP- DULL ORGANZA WITH HEAVY EMBROIDERY

M-217 C

BOTTOM/INNER- SANTOON

DUPATTA/NET- ORGANZA WITH WORK WITH 4 SIDE CUT WORK LACE

-  DRY CLEAN ONLY.
-  DO NOT USE ANY BLEACH OR STAIN REMOVING CHEMICAL.
-  IRON THE FABRIC AT MODERATE TEMPERATURE.



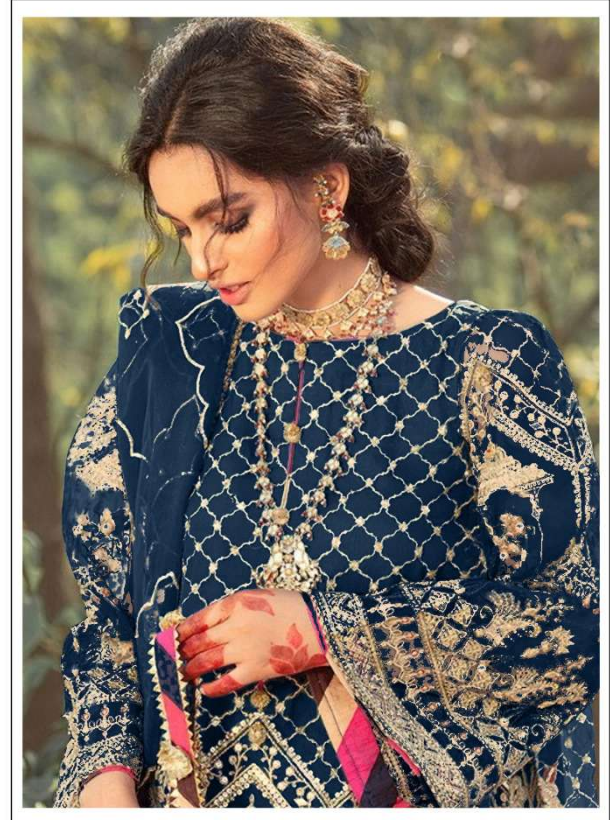
TOP- DULL ORGANZA WITH HEAVY EMBROIDERY

M-217 D

BOTTOM/INNER- SANTOON

DUPATTA/NET- ORGANZA WITH WORK WITH 4 SIDE CUT WORK LACE

- ☉ DRY CLEAN ONLY.
- ✘ DO NOT USE ANY BLEACH OR STAIN REMOVING CHEMICAL.
- ☎ IRON THE FABRIC AT MODERATE TEMPERATURE.



TOP- DULL ORGANZA WITH HEAVY EMBROIDERY

M-217 B

BOTTOM/INNER- SANTOON

DUPATTA/NET- ORGANZA WITH WORK WITH 4 SIDE CUT WORK LACE

- ☉ DRY CLEAN ONLY.
- ✘ DO NOT USE ANY BLEACH OR STAIN REMOVING CHEMICAL.
- ☎ IRON THE FABRIC AT MODERATE TEMPERATURE.





MUSHQ

TOP- DULL ORGANZA WITH HEAVY EMBROIDERY M-217

BOTTOM INNER- SANTOON

DUPATTA NET- ORGANZA WITH WORK WITH 4 SIDE CUT WORK LACE

☞ DRY CLEAN ONLY.
☞ DO NOT USE ANY BLEACH OR STAIN REMOVING CHEMICAL
☞ IRON THE FABRIC AT MODERATE TEMPERATURE





MUSHQ

TOP- DULL ORGANZA WITH HEAVY EMBROIDERY M-217 B

BOTTOM INNER- SANTOON

DUPATTA NET- ORGANZA WITH WORK WITH 4 SIDE CUT WORK LACE

☞ DRY CLEAN ONLY.
☞ DO NOT USE ANY BLEACH OR STAIN REMOVING CHEMICAL
☞ IRON THE FABRIC AT MODERATE TEMPERATURE





MUSHQ

TOP- DULL ORGANZA WITH HEAVY EMBROIDERY M-217 C

BOTTOM INNER- SANTOON

DUPATTA NET- ORGANZA WITH WORK WITH 4 SIDE CUT WORK LACE

☞ DRY CLEAN ONLY.
☞ DO NOT USE ANY BLEACH OR STAIN REMOVING CHEMICAL
☞ IRON THE FABRIC AT MODERATE TEMPERATURE





MUSHQ

TOP- DULL ORGANZA WITH HEAVY EMBROIDERY M-217 D

BOTTOM INNER- SANTOON

DUPATTA NET- ORGANZA WITH WORK WITH 4 SIDE CUT WORK LACE

☞ DRY CLEAN ONLY.
☞ DO NOT USE ANY BLEACH OR STAIN REMOVING CHEMICAL
☞ IRON THE FABRIC AT MODERATE TEMPERATURE