





**TOP- HEAVY FOX GEROGETTE EMBROIDERED
WITH DAIMOND WORK**

M-245

INNER- SANTOON

BOTTOM- SANTOON WITH WORK

DUPATTA/NET- HEAVY EMBROIDERY WORK

-  DRY CLEAN ONLY.
-  DO NOT USE ANY BLEACH OR STAIN REMOVING CHEMICAL.
-  IRON THE FABRIC AT MODERATE TEMPERATURE.



**TOP- HEAVY FOX GEROGETTE EMBROIDERED
WITH DAIMOND WORK**

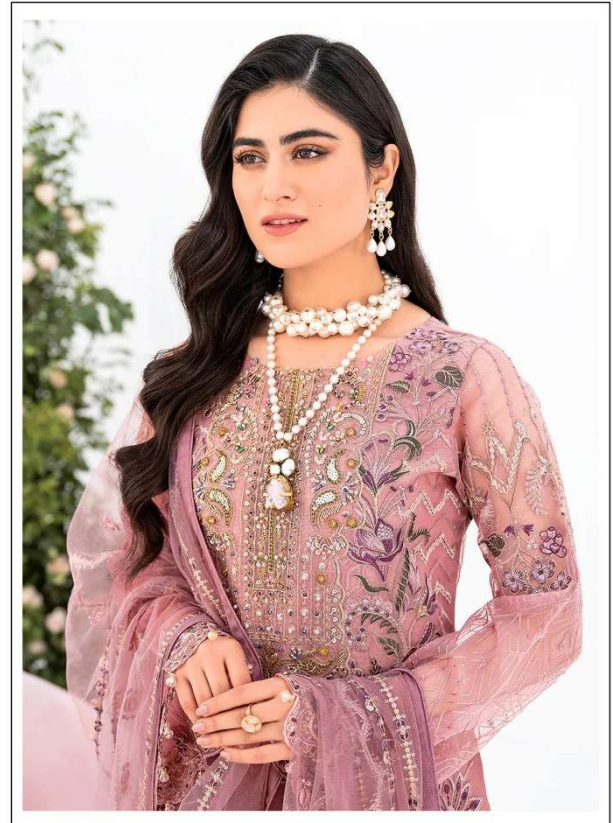
M-246

INNER- SANTOON

BOTTOM- SANTOON

DUPATTA/NET- HEAVY EMBROIDERY WORK

☉ DRY CLEAN ONLY.
✗ DO NOT USE ANY BLEACH OR STAIN REMOVING CHEMICAL.
☎ IRON THE FABRIC AT MODERATE TEMPERATURE.



**TOP- HEAVY FOX GEROGETTE EMBROIDERED
WITH DAIMOND WORK**

M-247

INNER- SANTOON

BOTTOM- SANTOON WITH WORK

DUPATTA/NET- HEAVY EMBROIDERY WORK

- ☉ DRY CLEAN ONLY.
- ✗ DO NOT USE ANY BLEACH OR STAIN REMOVING CHEMICAL.
- ☎ IRON THE FABRIC AT MODERATE TEMPERATURE.



**TOP- HEAVY FOX GEROGETTE EMBROIDERED
WITH DAIMOND WORK**

M-248

INNER- SANTOON

BOTTOM- SANTOON

DUPATTA/NET- HEAVY EMBROIDERY WORK

☉ DRY CLEAN ONLY.
✗ DO NOT USE ANY BLEACH OR STAIN REMOVING CHEMICAL.
☎ IRON THE FABRIC AT MODERATE TEMPERATURE.



TOP- HEAVY FOX GEROGETTE EMBROIDERED WITH DAIMOND WORK

M-245

INNER- SANTOON

BOTTOM- SANTOON WITH WORK

DUPATTANET- HEAVY EMBROIDERY WORK

☉ DRY CLEAN ONLY.
⊗ DO NOT USE ANY BLEACH OR STAIN REMOVING CHEMICAL.
☼ IRON THE FABRIC AT MODERATE TEMPERATURE.



TOP- HEAVY FOX GEROGETTE EMBROIDERED WITH DAIMOND WORK

M-246

INNER- SANTOON

BOTTOM- SANTOON

DUPATTANET- HEAVY EMBROIDERY WORK

☉ DRY CLEAN ONLY.
⊗ DO NOT USE ANY BLEACH OR STAIN REMOVING CHEMICAL.
☼ IRON THE FABRIC AT MODERATE TEMPERATURE.



TOP- HEAVY FOX GEROGETTE EMBROIDERED WITH DAIMOND WORK

M-247

INNER- SANTOON

BOTTOM- SANTOON WITH WORK

DUPATTANET- HEAVY EMBROIDERY WORK

☉ DRY CLEAN ONLY.
⊗ DO NOT USE ANY BLEACH OR STAIN REMOVING CHEMICAL.
☼ IRON THE FABRIC AT MODERATE TEMPERATURE.



TOP- HEAVY FOX GEROGETTE EMBROIDERED WITH DAIMOND WORK

M-248

INNER- SANTOON

BOTTOM- SANTOON

DUPATTANET- HEAVY EMBROIDERY WORK

☉ DRY CLEAN ONLY.
⊗ DO NOT USE ANY BLEACH OR STAIN REMOVING CHEMICAL.
☼ IRON THE FABRIC AT MODERATE TEMPERATURE.