

A woman is shown in profile, looking upwards and to the left. She is wearing a gold-colored, long-sleeved top with intricate floral and paisley embroidery. A dark shawl with colorful floral patterns is draped over her shoulders. She is adorned with a multi-strand necklace featuring green and gold beads, a silver choker, and large, ornate earrings. Her hair is styled in a braid. The background is a warm, textured wall with architectural details.

S

Firdous  
**URBANE - 23** NX

DS

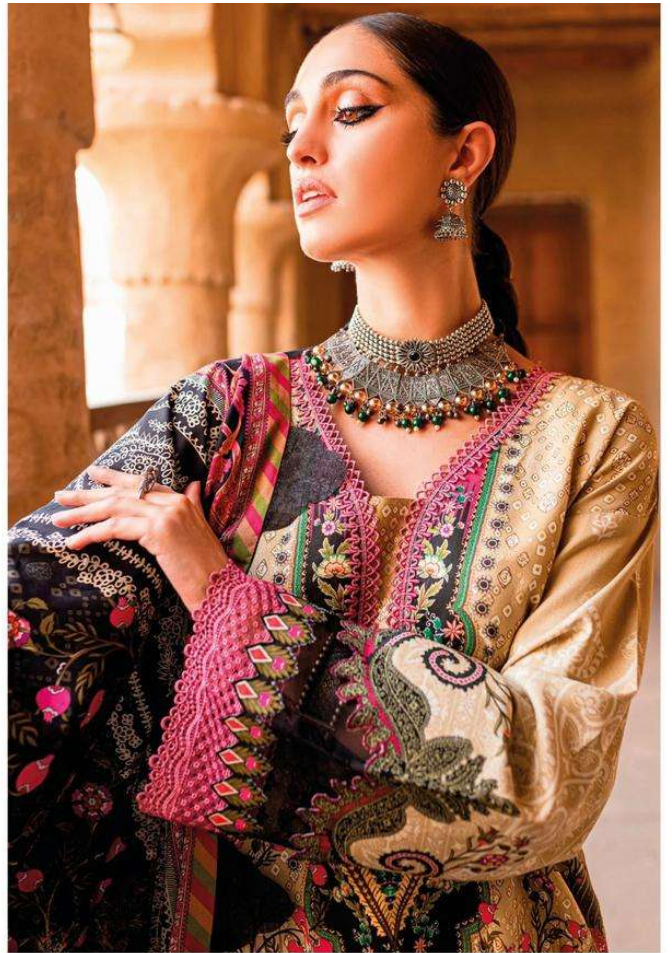


2081





Firdous  
**URBANE -23**



2085

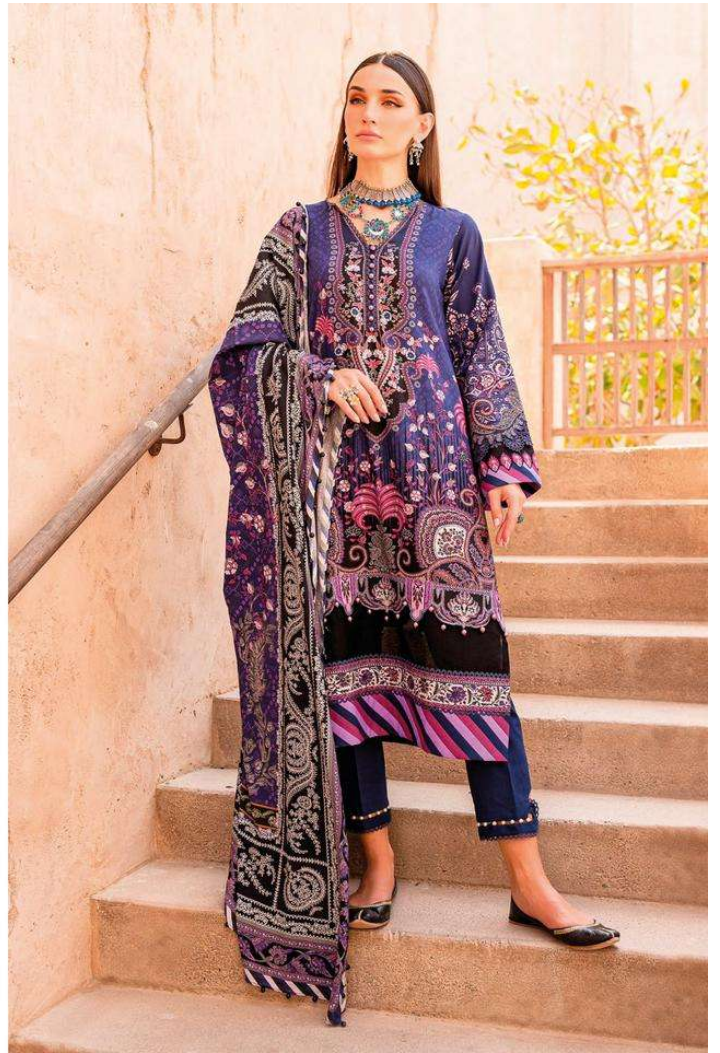


Firdous  
**URBANE -23**

DS

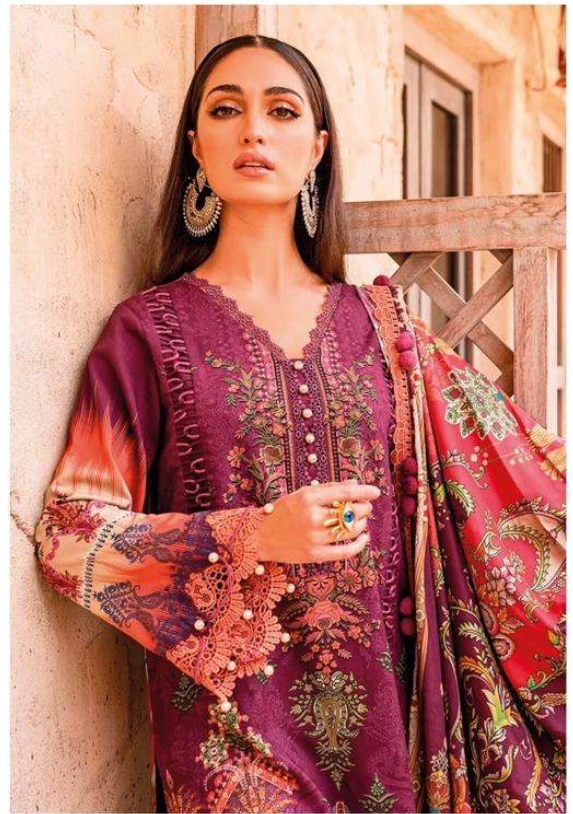


2086





Firdous  
**URBANE -23**



2087





Firdous  
**URBANE -23**



2081



2085



2086



2087

Firdous  
**URBANE -23**  
Nx