





DS-178-A

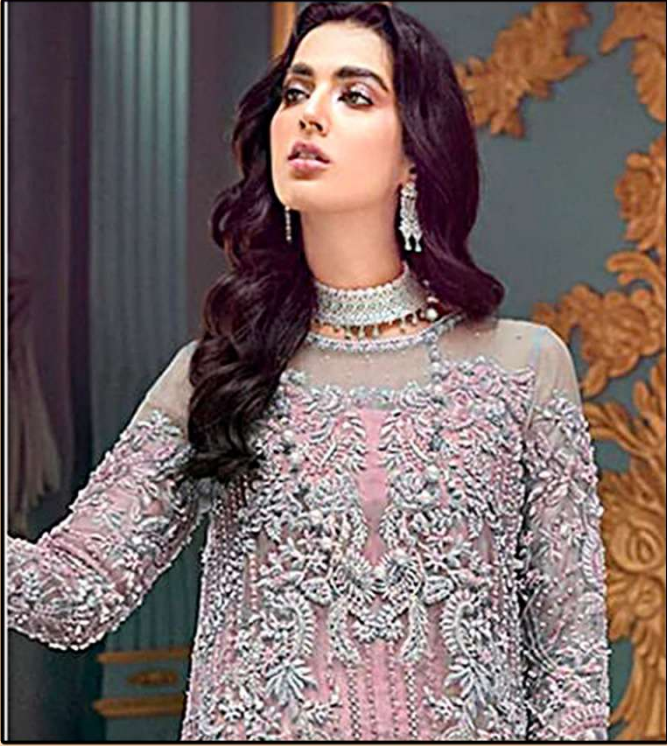
**Top- ORGANZA EMBROIDERY WITH
APLIQUE & PEARL WORK**

Bottom/Iner- SANTOON

Dupatta- ORGANZA EMBROIDERY

WASHING INSTRUCTIONS
DO NOT USE ANY TYPE OF BLEACH OR FORMALDEHYDE CHEMICALS
BEFORE CUTTING THE FABRIC SHOULD BE SOAKED IN WATER
ALL COMPONENTS WASHED FOR 15 MINUTES
DO NOT USE HOT IRON OR PRESSURE FROM IRON TO AVOID DAMAGE
WASH COLOURED AND WHITE FABRICS SEPARATELY
IRON COLOURED FABRICS AT LOW TEMPERATURE FROM INSIDE TO OUTSIDE
DRESSING ROOMS AND ACCESSORIES ARE NOT ALLOWED





DS-178-C

**Top- ORGANZA EMBROIDERY WITH
APLIQUE & PEARL WORK**

Bottom/Iner- SANTOON

Dupatta- ORGANZA EMBROIDERY

WASHING INSTRUCTIONS
 DO NOT USE ANY TYPE OF BLEACH OR FORMALDEHYDE CHEMICALS
 BEFORE DYEING OR STAINING. SHOULD BE WASHED IN COLD WATER
 ALL COMPONENTS WASHED SEPARATELY FOR 15 MINUTES
 DO NOT USE HOT IRON OR PRESSURE DRYER. HANG TO DRY IN SHADE
 WASH COLOURED AND WHITE FABRICS SEPARATELY
 IRON CLOTHES AT MODERATE TEMPERATURE. DO NOT USE STARCH OR GLOSSY FINISH
 DRY CLEANING IS RECOMMENDED FOR ALL ACCESSORIES AND NOT INCLUDED





DS-178-B

**Top- ORGANZA EMBROIDERY WITH
APLIQUE & PEARL WORK**

Bottom/Iner- SANTOON

Dupatta- ORGANZA EMBROIDERY

WASHING INSTRUCTIONS
 DO NOT USE ANY TYPE OF BLEACH OR FORMALDEHYDE CHEMICALS
 BEFORE DYEING OR STAINING. SHOULD BE WASHED IN COLD WATER
 ALL COMPONENTS WASHED FOR 15 MINUTES
 DO NOT USE HOT IRON OR PRESSURE FROM IRON TO AVOID OF MARKS
 WASH COLOURED AND WHITE FABRICS SEPARATELY
 IRON COLOURED FABRICS SHOULD BE WASHED IN COLD WATER
 BEFORE WASHING AND DRYING. ARE NOT WASHABLE





DS-178-D

**Top- ORGANZA EMBROIDERY WITH
APLIQUE & PEARL WORK**

Bottom/Iner- SANTOON

Dupatta- ORGANZA EMBROIDERY

WASHING INSTRUCTIONS
DO NOT USE ANY TYPE OF BLEACH OR SOAKING CHROMICLES
BEFORE CUTTING FABRIC SHOULD BE SOAKED IN WATER
ALL COMPONENTS FOR 15 MINUTES
DO NOT USE HOT IRON OR THUSTED IRON PRESS TO AVOID OF MARKS
WASH COLOURED AND WHITE FABRICS SEPERATELY
IRON COLLARS BY WASHABLE THERMOPREHE FOLDING ONLY FROM INSIDE TO SUNDRY
BETWEEN WASHING AND ACCESSORIES ARE NOT ALLOWED





**Top- ORGANZA EMBROIDERY WITH
APLIQUE & PEARL WORK**

Bottom/Iner- SANTOON

Dupatta- ORGANZA EMBROIDERY



DS-178-A



DS-178-B



DS-178-C



DS-178-D

