



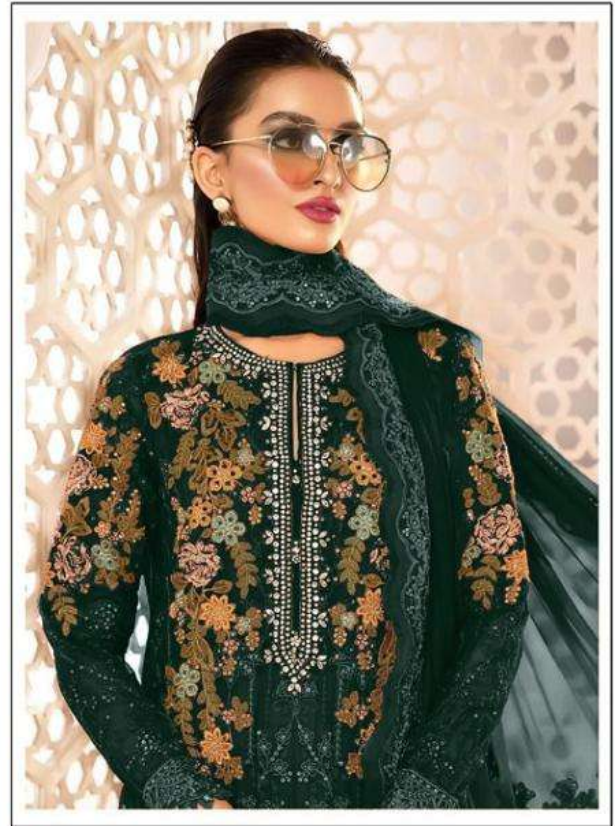
TOP- HEAVY FOX GEORGETTE WITH
EMBROIDERED & DIAMOND MOTI

M-173 F

BOTTOM/INER- SANTOON

DUPATTA - HEAVY NAZMEEN WITH
HEAVY EMBROIDERY WORK

- ☉ DRY CLEAN ONLY.
- ✘ DO NOT USE ANY BLEACH OR STAIN REMOVING CHEMICAL.
- ☎ IRON THE FABRIC AT MODERATE TEMPERATURE.



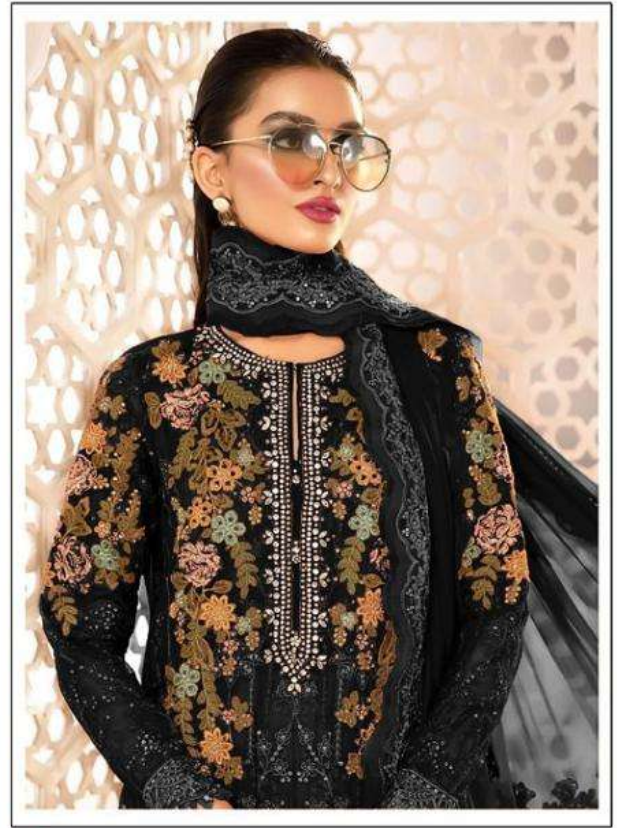
TOP- HEAVY FOX GEORGETTE WITH EMBROIDERED & DIAMOND MOTI

M-173 B

BOTTOM/INER- SANTOON

DUPATTA - HEAVY NAZMEEN WITH HEAVY EMBROIDERY WORK

-  DRY CLEAN ONLY.
-  DO NOT USE ANY BLEACH OR STAIN REMOVING CHEMICAL.
-  IRON THE FABRIC AT MODERATE TEMPERATURE.



TOP - HEAVY FOX GEORGETTE WITH EMBROIDERED & DIAMOND MOTI

M-173 D

BOTTOM/INER - SANTOON

DUPATTA - HEAVY NAZMEEN WITH HEAVY EMBROIDERY WORK

-  DRY CLEAN ONLY.
-  DO NOT USE ANY BLEACH OR STAIN REMOVING CHEMICAL.
-  IRON THE FABRIC AT MODERATE TEMPERATURE.



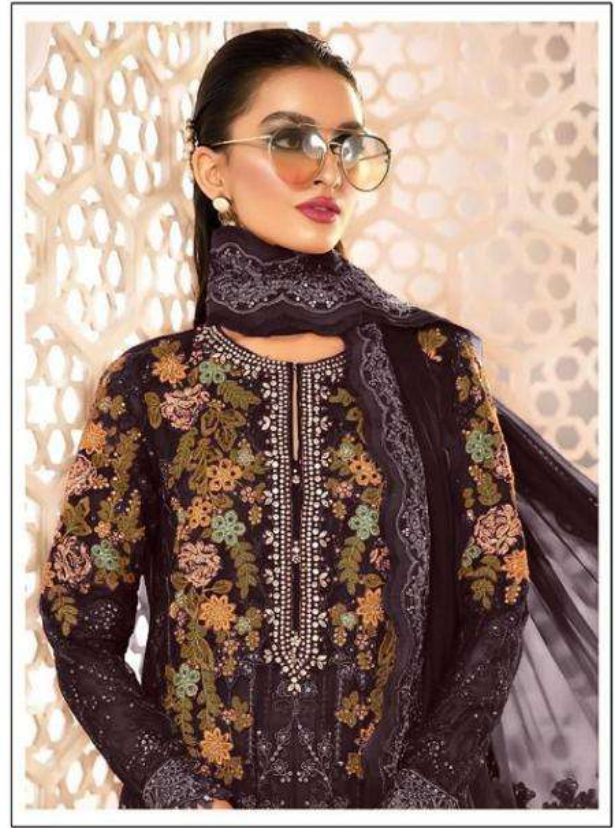
TOP- HEAVY FOX GEORGETTE WITH EMBROIDERED & DIAMOND MOTI

M-173 F

BOTTOM/INER- SANTOON

DUPATTA - HEAVY NAZMEEN WITH HEAVY EMBROIDERY WORK

- ☉ DRY CLEAN ONLY.
- ✗ DO NOT USE ANY BLEACH OR STAIN REMOVING CHEMICAL.
- ☎ IRON THE FABRIC AT MODERATE TEMPERATURE.



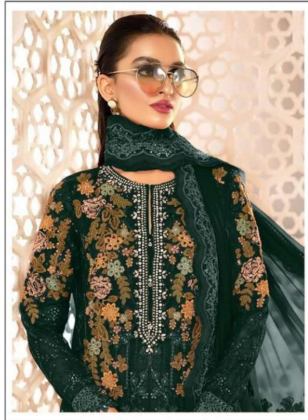
TOP - HEAVY FOX GEORGETTE WITH EMBROIDERED & DIAMOND MOTI

M-173 G

BOTTOM/INER - SANTOON

DUPATTA - HEAVY NAZMEEN WITH HEAVY EMBROIDERY WORK

-  DRY CLEAN ONLY.
-  DO NOT USE ANY BLEACH OR STAIN REMOVING CHEMICAL.
-  IRON THE FABRIC AT MODERATE TEMPERATURE.

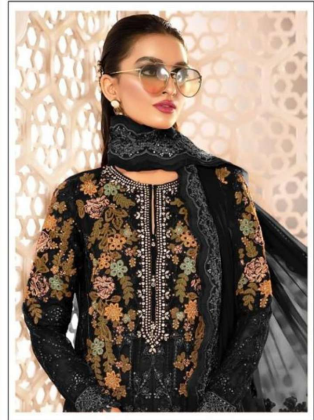


TOP- HEAVY FOX GEORGETTE WITH EMBROIDERED & DIAMOND MOTI (M-173 B)

BOTTOMINER- SANTOON

DUPATTA - HEAVY NAZMEEN WITH HEAVY EMBROIDERY WORK

☑ DRY CLEAN ONLY.
 ✗ DO NOT USE ANY BLEACH OR STAIN REMOVING CHEMICAL.
 ☑ IRON THE FABRIC AT MODERATE TEMPERATURE.

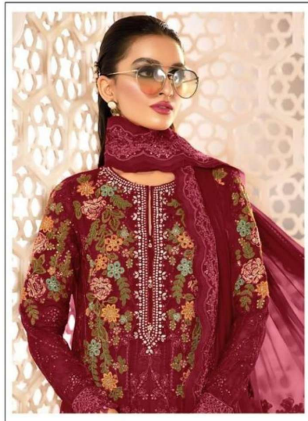


TOP- HEAVY FOX GEORGETTE WITH EMBROIDERED & DIAMOND MOTI (M-173 D)

BOTTOMINER- SANTOON

DUPATTA - HEAVY NAZMEEN WITH HEAVY EMBROIDERY WORK

☑ DRY CLEAN ONLY.
 ✗ DO NOT USE ANY BLEACH OR STAIN REMOVING CHEMICAL.
 ☑ IRON THE FABRIC AT MODERATE TEMPERATURE.



TOP- HEAVY FOX GEORGETTE WITH EMBROIDERED & DIAMOND MOTI (M-173 F)

BOTTOMINER- SANTOON

DUPATTA - HEAVY NAZMEEN WITH HEAVY EMBROIDERY WORK

☑ DRY CLEAN ONLY.
 ✗ DO NOT USE ANY BLEACH OR STAIN REMOVING CHEMICAL.
 ☑ IRON THE FABRIC AT MODERATE TEMPERATURE.



TOP- HEAVY FOX GEORGETTE WITH EMBROIDERED & DIAMOND MOTI (M-173 G)

BOTTOMINER- SANTOON

DUPATTA - HEAVY NAZMEEN WITH HEAVY EMBROIDERY WORK

☑ DRY CLEAN ONLY.
 ✗ DO NOT USE ANY BLEACH OR STAIN REMOVING CHEMICAL.
 ☑ IRON THE FABRIC AT MODERATE TEMPERATURE.