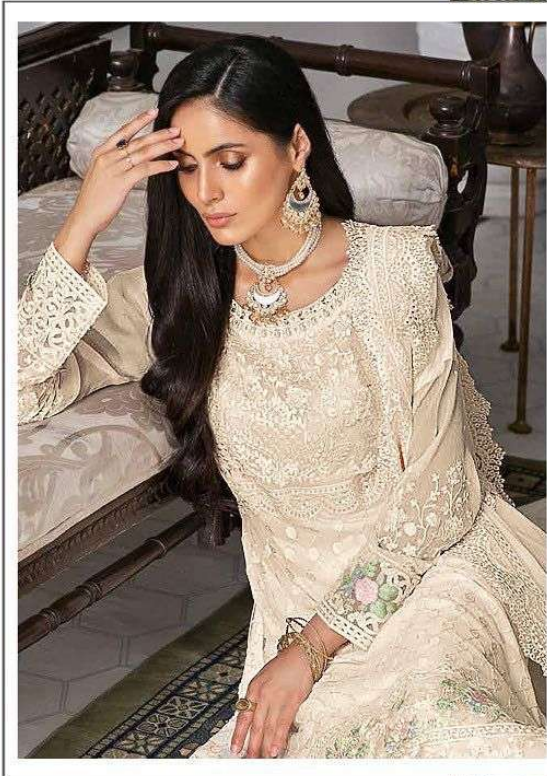


Fepic®

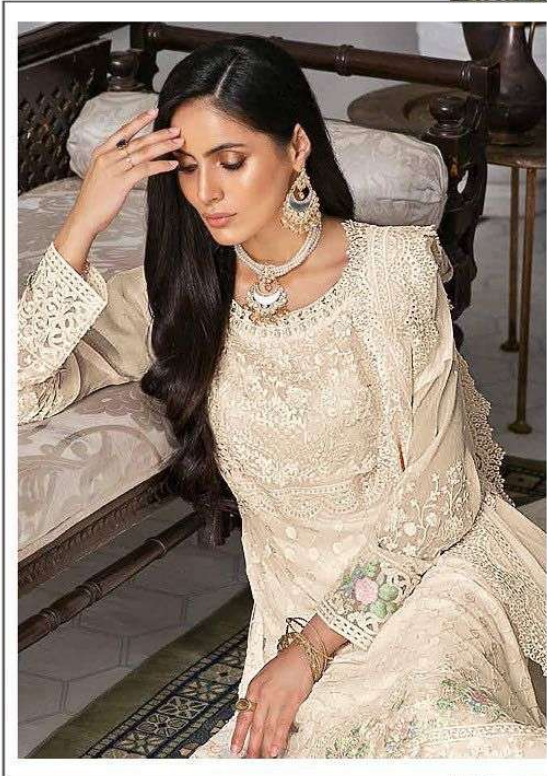


WASHING INTRUCTIONS

DO NOT USE ANY TYPE OF BLEACH OR STAIN REMOVING CHEMICALS
BEFORE CUTTING / STITCHING, FABRIC SHOULD BE SOAKED IN WATER
(ALL COMPONENTS SEPARATELY) FOR 15 MINUTES
DO NOT KEEP WET FABRIC IN TWISTED FROM IN ORDER TO AVOID COPY MARKS |
WASH COLOURED AND WHITE FABRICS SEPARATELY
IRON CLOTHES AT MODERATE TEMPERATURE | DO NOT DRY FABRIC IN DIRECT SUNLIGHT
(EXTRA LACES, HANGINGS AND ACCESSORIES ARE NOT INDUDED)

C-1510 A

Fepic®



WASHING INTRUCTIONS

DO NOT USE ANY TYPE OF BLEACH OR STAIN REMOVING CHEMICALS
BEFORE CUTTING / STITCHING, FABRIC SHOULD BE SOAKED IN WATER
(ALL COMPONENTS SEPARATELY) FOR 15 MINUTES
DO NOT KEEP WET FABRIC IN TWISTED FROM IN ORDER TO AVOID COPY MARKS |
WASH COLOURED AND WHITE FABRICS SEPARATELY
IRON CLOTHES AT MODERATE TEMPERATURE | DO NOT DRY FABRIC IN DIRECT SUNLIGHT
(EXTRA LACES, HANGINGS AND ACCESSORIES ARE NOT INDUED)

C-1510 A

Fepic®

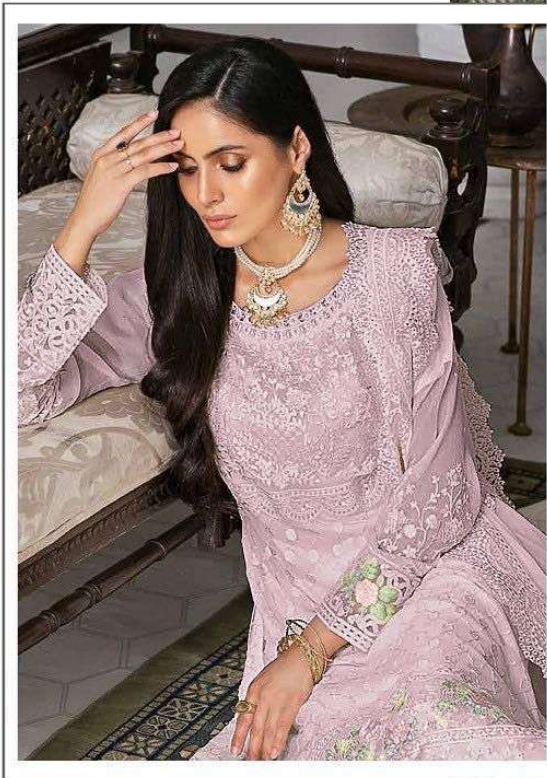


WASHING INTRUCTIONS

DO NOT USE ANY TYPE OF BLEACH OR STAIN REMOVING CHEMICALS
BEFORE CUTTING / STITCHING, FABRIC SHOULD BE SOAKED IN WATER
(ALL COMPONENTS SEPARATELY) FOR 15 MINUTES
DO NOT KEEP WET FABRIC IN TWISTED FROM IN ORDER TO AVOID COPY MARKS |
WASH COLOURED AND WHITE FABRICS SEPARATELY
IRON CLOTHES AT MODERATE TEMPERATURE | DO NOT DRY FABRIC IN DIRECT SUNLIGHT
(EXTRA LACES, HANGINGS AND ACCESSORIES ARE NOT INDUED)

C-1510 C

Fepic[®]

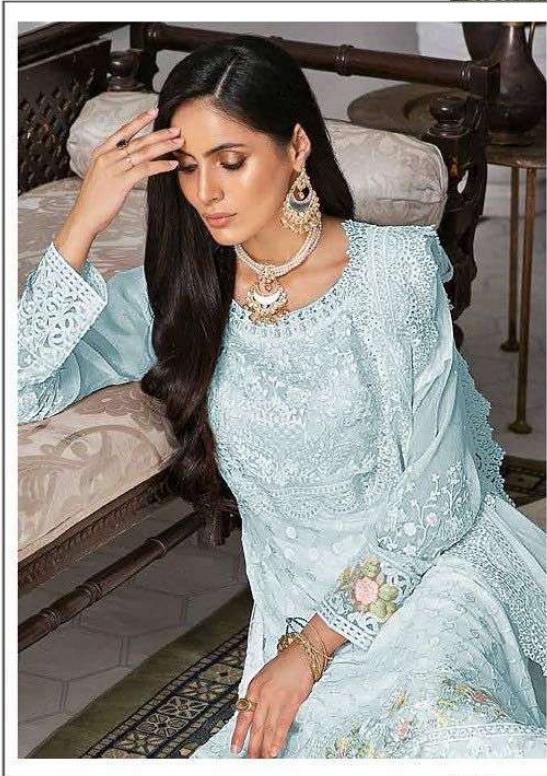


WASHING INTRUCTIONS

DO NOT USE ANY TYPE OF BLEACH OR STAIN REMOVING CHEMICALS
BEFORE CUTTING / STITCHING, FABRIC SHOULD BE SOAKED IN WATER
(ALL COMPONENTS SEPARATELY) FOR 15 MINUTES
DO NOT KEEP WET FABRIC IN TWISTED FROM IN ORDER TO AVOID COPY MARKS |
WASH COLOURED AND WHITE FABRICS SEPARATELY
IRON CLOTHES AT MODERATE TEMPERATURE | DO NOT DRY FABRIC IN DIRECT SUNLIGHT
(EXTRA LACES, HANGINGS AND ACCESSORIES ARE NOT INDUED)

C-1510 B

Fepic[®]



WASHING INTRUCTIONS

DO NOT USE ANY TYPE OF BLEACH OR STAIN REMOVING CHEMICALS
BEFORE CUTTING / STITCHING, FABRIC SHOULD BE SOAKED IN WATER
(ALL COMPONENTS SEPARATELY) FOR 15 MINUTES

DO NOT KEEP WET FABRIC IN TWISTED FROM IN ORDER TO AVOID COPY MARKS |

WASH COLOURED AND WHITE FABRICS SEPARATELY

IRON CLOTHES AT MODERATE TEMPERATURE | DO NOT DRY FABRIC IN DIRECT SUNLIGHT
(EXTRA LACES, HANGINGS AND ACCESSORIES ARE NOT INLUDED)

C-1510 D



Fepic®

C-1510 C

WASHING INSTRUCTIONS:
Wash in cold water with gentle detergent. Do not use bleach. Do not iron. Do not dry clean. Do not tumble dry. Do not hang dry. Do not use steam. Do not use heat. Do not use direct sunlight. Do not use fire. Do not use open flame. Do not use candles. Do not use matches. Do not use lighters. Do not use stoves. Do not use ovens. Do not use microwaves. Do not use toasters. Do not use kettles. Do not use coffee makers. Do not use blenders. Do not use mixers. Do not use food processors. Do not use juicers. Do not use grinders. Do not use blenders. Do not use mixers. Do not use food processors. Do not use juicers. Do not use grinders.

Fepic®

C-1510 B

WASHING INSTRUCTIONS:
Wash in cold water with gentle detergent. Do not use bleach. Do not iron. Do not dry clean. Do not tumble dry. Do not hang dry. Do not use steam. Do not use heat. Do not use direct sunlight. Do not use fire. Do not use open flame. Do not use candles. Do not use matches. Do not use lighters. Do not use stoves. Do not use ovens. Do not use microwaves. Do not use toasters. Do not use kettles. Do not use coffee makers. Do not use blenders. Do not use mixers. Do not use food processors. Do not use juicers. Do not use grinders.

Fepic®

C-1510 D

WASHING INSTRUCTIONS:
Wash in cold water with gentle detergent. Do not use bleach. Do not iron. Do not dry clean. Do not tumble dry. Do not hang dry. Do not use steam. Do not use heat. Do not use direct sunlight. Do not use fire. Do not use open flame. Do not use candles. Do not use matches. Do not use lighters. Do not use stoves. Do not use ovens. Do not use microwaves. Do not use toasters. Do not use kettles. Do not use coffee makers. Do not use blenders. Do not use mixers. Do not use food processors. Do not use juicers. Do not use grinders.

Fepic®

C-1510 A

WASHING INSTRUCTIONS:
Wash in cold water with gentle detergent. Do not use bleach. Do not iron. Do not dry clean. Do not tumble dry. Do not hang dry. Do not use steam. Do not use heat. Do not use direct sunlight. Do not use fire. Do not use open flame. Do not use candles. Do not use matches. Do not use lighters. Do not use stoves. Do not use ovens. Do not use microwaves. Do not use toasters. Do not use kettles. Do not use coffee makers. Do not use blenders. Do not use mixers. Do not use food processors. Do not use juicers. Do not use grinders.